

# AUTO EXPRESS 86



"CARMEN ERNESTINA"

YARD NO: 95

DESTINATION: VENEZUELA

DELIVERED: JUNE 1999

CLIENT: CONFERRY

## PRINCIPAL DIMENSIONS

|                            |                 |             |
|----------------------------|-----------------|-------------|
| Length overall             |                 | 86.6 metres |
| Length waterline           |                 | 74.2 metres |
| Beam (moulded)             |                 | 24.0 metres |
| Depth (moulded)            |                 | 7.3 metres  |
| Hull draft (approx.)       |                 | 3.2 metres  |
| Vehicle deck clear heights | Centre lane     | 4.4 metres  |
|                            | Side lanes      | 2.2 metres  |
|                            | Mezzanine lanes | 2.0 metres  |

## PAYLOAD & CAPACITIES

|                    |                 |                            |
|--------------------|-----------------|----------------------------|
| Passengers         |                 | 800                        |
| Vehicles           |                 | 200 cars                   |
|                    |                 | or 10 coaches & 125 cars   |
| Maximum deadweight |                 | 400 tonnes                 |
| Maximum axle loads | Centre lanes    | (dual wheels) 12.0 tonnes  |
|                    |                 | (single wheels) 9.0 tonnes |
|                    | Side lanes      | 1.0 tonne                  |
|                    | Mezzanine lanes | 1.0 tonne                  |
| Crew               |                 | 30                         |
| Fuel               |                 | 160,000 litres             |

## PROPULSION

|              |                        |
|--------------|------------------------|
| Main engines | 4 x Caterpillar 3618   |
|              | 4 x 7,200kW @ 1,050rpm |
| Gearboxes    | 4 x Reintjes Vlj 6831  |
| Waterjets    | 4 x KaMeWa 112 S11     |

## PERFORMANCE (with Ride Control fitted)

|                                      |               |
|--------------------------------------|---------------|
| Speed (400 t DWT, 100% MCR)          | 42.0 knots    |
| Service speed (400 t DWT, 90% MCR)   | 40.0 knots    |
| Fuel consumption (approx.) @ 90% MCR | 5.3 tonnes/hr |

## CLASSIFICATION

Germanischer Lloyd  
 † 100A5 HSC-B OC3, Highspeed Passenger/ Ro.Ro Type, MC, HSC B



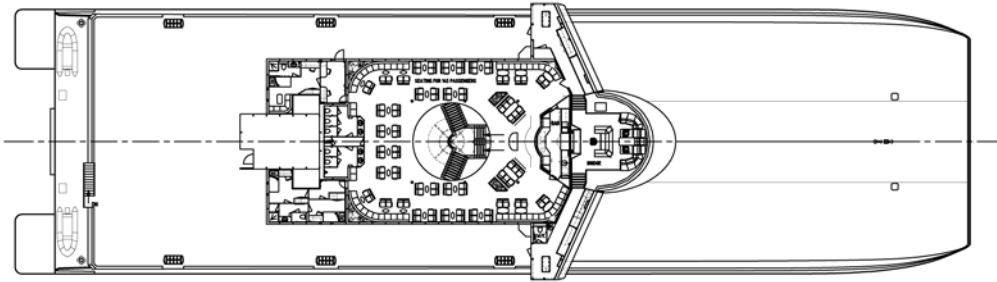
# AUTO EXPRESS 86

Vessel type: 86m High Speed Vehicle-Passenger Catamaran

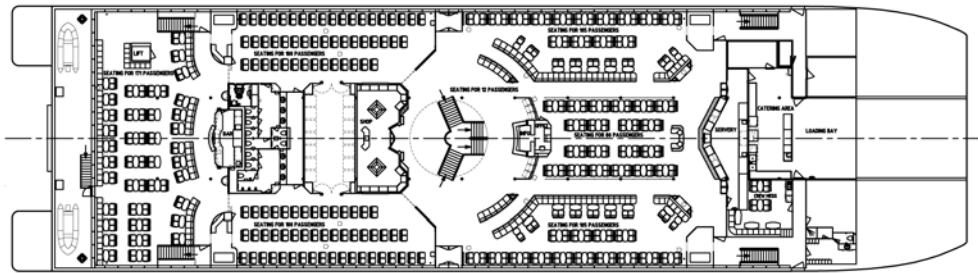
PROFILE



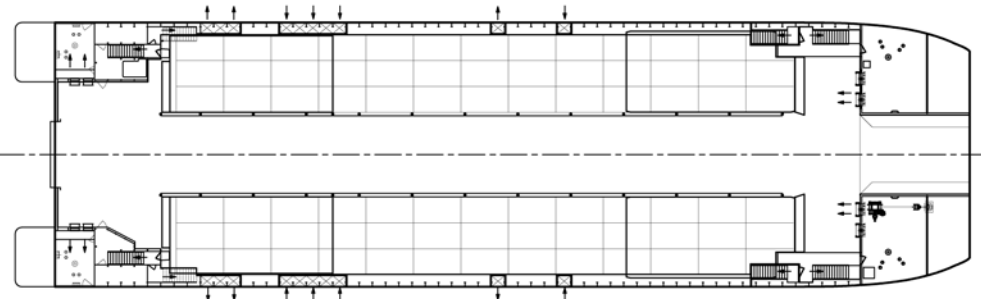
BRIDGE DECK



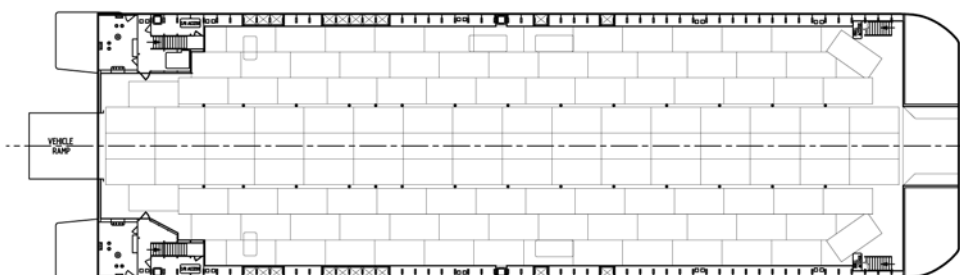
UPPER DECK



MEZZANINE DECK



MAIN DECK



"CARMEN ERNESTINA"

YARD NO: 95

DESTINATION: VENEZUELA

DELIVERED: JUNE 1999

CLIENT: CONFERRIA