

# AUTO EXPRESS 86



"JONATHAN SWIFT"

YARD NO.: 94

DESTINATION: IRELAND

DELIVERED: MAY 1 999

CLIENT: IRISH FERRIES

## PRINCIPAL DIMENSIONS

Length overall		86.6 metres
Length waterline		74.2 metres
Beam (moulded) 2		4.0 metres
Hull draft (approx.)		3.2 metres
Moulded depth		7.3 metres
Vehicle deck clear heights	Centre lane	4.4 metres
	Side lanes	2.2 metres
	Mezzanine	2.0 metres

## PAYLOAD & CAPACITIES

Passengers		800
Vehicles		200 cars or 125 cars & 10 buses
Maximum deadweight		400 tonnes
Maximum axle loads	Centre lanes	(dual wheels) 12.0 tonnes (single wheels) 9.0 tonnes
	Side lanes	1.0 tonne
	Mezzanine lanes	1.0 tonne
Crew		30
Fuel		160,000 litres

## PROPULSION

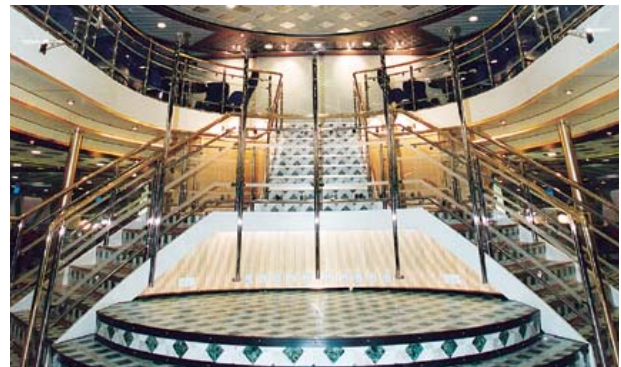
Main engines	4 x Caterpillar 3618 7,200kW @ 1,050rpm
Gearboxes	4 x Reintjes VJ 6831
Waterjets	4 x KaMeWa 112 SII

## PERFORMANCE (with Ride Control fitted)

Speed (400 t DWT, 100% MCR)	42 knots
Service Speed (400 t DWT, 90% MCR)	40 knots
Fuel Consumption (approx.) @ 90% MCR	5.3 tonnes/hr

## CLASSIFICATION

Germanischer Lloyd  
 † 100 A5, HSC-B, OC 3



# AUTO EXPRESS 86

Vessel type: 86m High Speed Vehicle-Passenger Catamaran

"JONATHAN SWIFT"

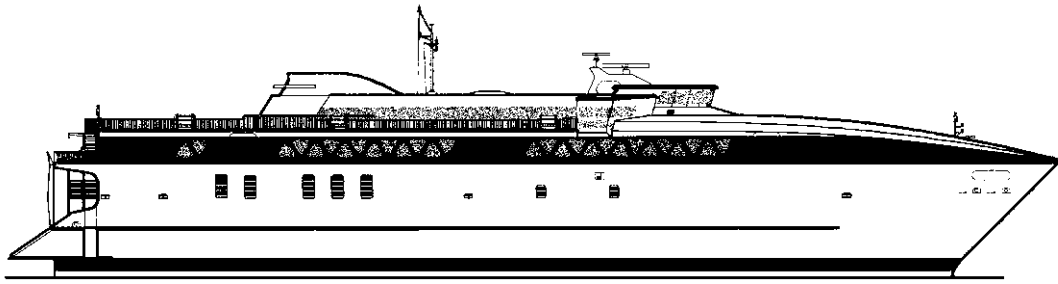
YARD NO: 94

DESTINATION: IRELAND

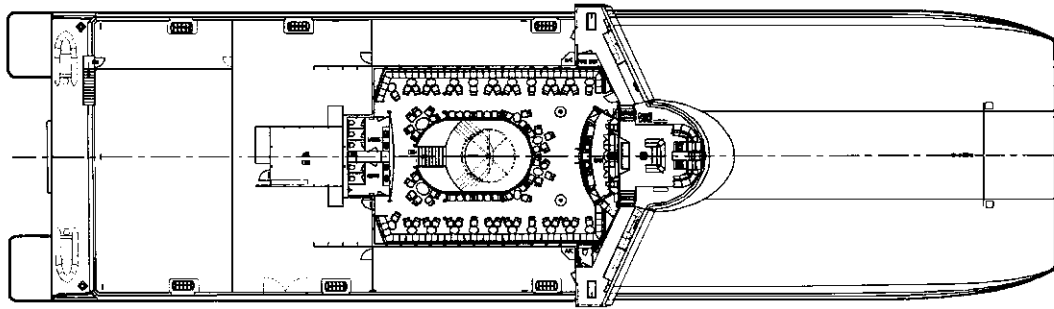
DELIVERED: MAY 1999

CLIENT: IRISH FERRIES

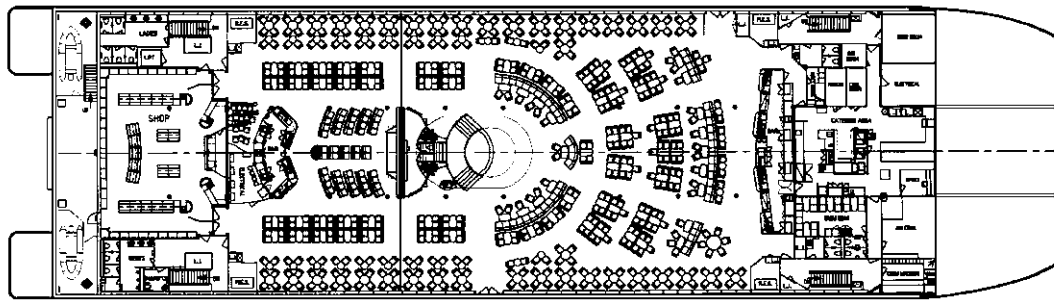
PROFILE



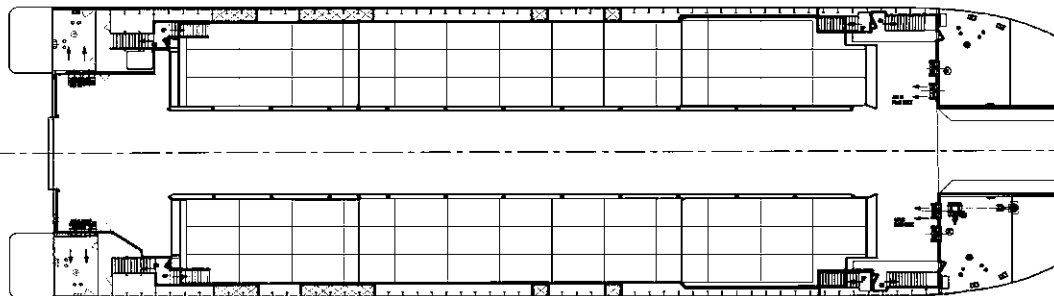
BRIDGE DECK



UPPER DECK



MEZZANINE DECK



MAIN DECK

