

AUTO EXPRESS 86



YARD NO : 251
"SPIRIT OF ONTARIO 1"

DESTINATION : USA

DELIVERED : JUNE 2004

CLIENT : CANADIAN AMERICAN TRANSPORTATION SYSTEMS

PRINCIPAL DIMENSIONS

| | |
|----------------------------|-------------|
| Length overall | 86.6 metres |
| Length (waterline) | 74.2 metres |
| Beam (moulded) | 23.8 metres |
| Depth (moulded) | 7.6 metres |
| Hull Draft (maximum) | 3.2 metres |
| Vehicle deck clear heights | |
| - centre lanes | 4.5 metres |
| - side lanes | 2.7 metres |
| - mezzanine lanes | 2.0 metres |

PAYLOAD AND CAPACITIES

| | |
|---------------------------------|---------------------------------------|
| Passengers | 774 |
| Vehicles | 238 cars or 10 trucks and 150 cars |
| Maximum deadweight | 470 tonnes |
| Maximum axle loads | |
| - centre lanes (dual axle load) | 15.0 tonnes |
| (single axle load) | 12.0 tonnes |
| - side lanes | 3.5 tonnes |
| - mezzanine lanes | 1.0 tonnes |
| Crew | 26 |
| Fuel | 160,000 litres |

PROPULSION

| | |
|--------------|---|
| Main engines | 4 x MTU 20V 8000 M70 4 x 8,200 kW @ 1150 rpm |
| Gearboxes | 4 x ZF 53000 |
| Waterjets | 4 x Lips L120E |

PERFORMANCE

| | |
|--------------------------------------|---------------|
| Speed (308 t DWT, 100% MCR) | 45.6 knots |
| Fuel consumption (approx.) @ 90% MCR | 5.9 tonnes/hr |

SURVEY

| | |
|----------------|--|
| Classification | Germanischer Lloyd \star 100A5 HSC-B OC3 |
|----------------|--|



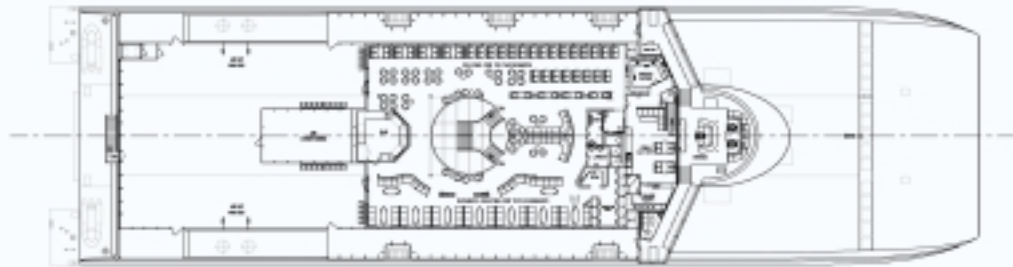
AUTO EXPRESS 86

Vessel type: 86m high speed vehicle-passenger catamaran

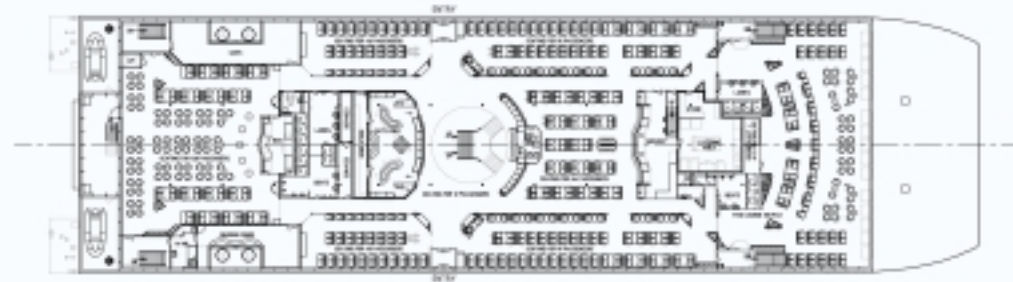
PROFILE



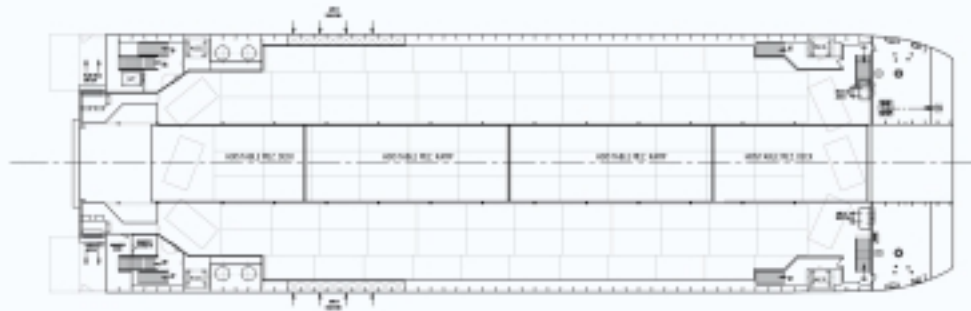
BRIDGE DECK



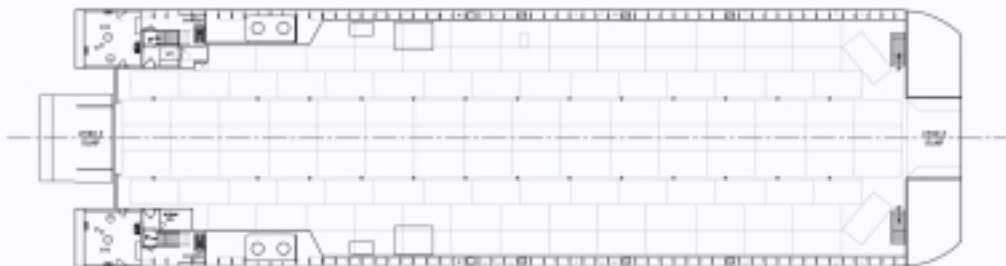
UPPER DECK



MEZZANINE DECK



MAIN DECK



YARD NO: 251
"SPIRIT OF ONTARIO 1"

DESTINATION: USA

DELIVERED: JUNE 2004

CLIENT: CANADIAN AMERICAN TRANSPORTATION SYSTEMS

100 Clarence Beach Road
Henderson
Western Australia 6166

Tel +61 8 9410 1111
Fax +61 8 9410 2564
marketing@austal.com
www.austal.com

