

AUSTAL PATROL 22



YARD NO: 152 - 153
"NSW WATER POLICE - CLASS 1"

DESTINATION: AUSTRALIA

DELIVERED: AUGUST 2000

CLIENT: NSW WATER POLICE

GENERAL VESSEL DESCRIPTION

Vessel type	Police patrol boat
Material	Aluminium alloy
Hull form	Warped planing monohull

PRINCIPAL DIMENSIONS

Length overall	21.2 metres
Length (waterline)	17.9 metres
Beam (moulded)	5.5 metres
Depth (moulded)	3.3 metres
Hull draft (maximum)	1.7 metres

PERSONNEL

Crew	4
Additional personnel	8
Accommodation	6

PROPULSION

Main engines	2 x MAN D2842 LE408 2 x 735 kW @ 2,100 rpm
Gearboxes	2 x ZF BW155
Propellers	2 x fixed pitch, 4 blade

PERFORMANCE

Speed - maximum	28.5 knots
Fuel consumption	0.35 tonnes/hour
Range	600 nautical miles

CLASSIFICATION

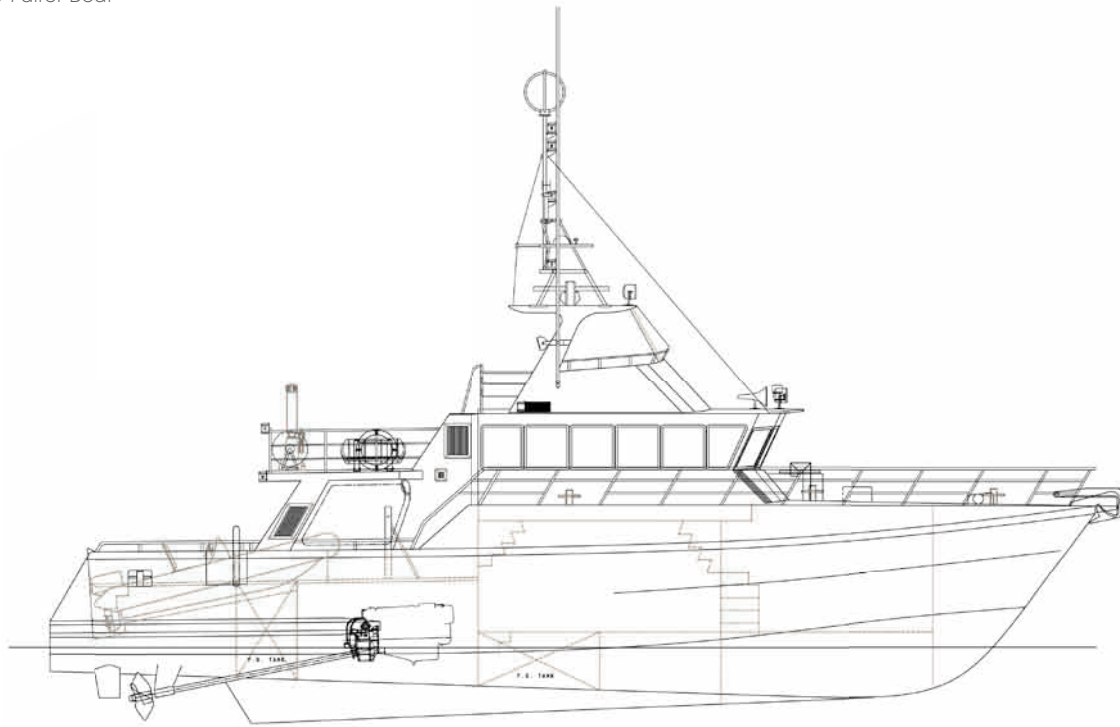
USL Code 2B - 200nm offshore



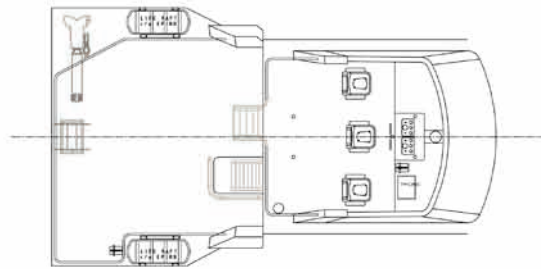
AUSTAL PATROL 22

Vessel type: Police Patrol Boat

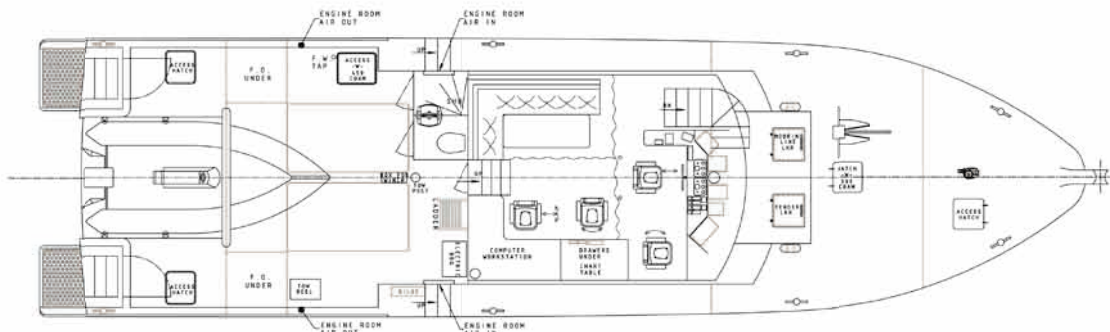
PROFILE



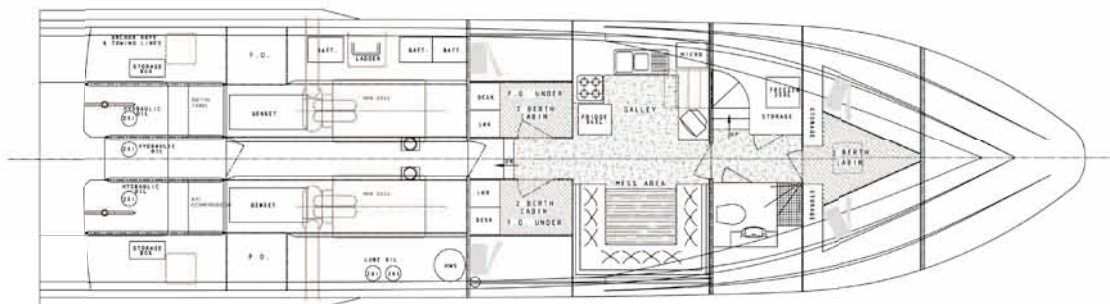
BRIDGE DECK



MAIN DECK



HULLS



YARD NO: 152 - 153
"NSW WATER POLICE - CLASS 1"

DESTINATION: AUSTRALIA

DELIVERED: AUGUST 2000

CLIENT: NSW WATER POLICE

100 Clarence Beach Road
Henderson
Western Australia 6166
Tel +61 8 9410 1111
Fax +61 8 9410 2564
sales@austal.com
www.austal.com

