

AUSTAL 41



"SALTEN" & "STEGTIND"

YARD NO: 242 & 243

DESTINATION: NORWAY

DELIVERED: MAY 2003

CLIENT: OYDVS

PRINCIPAL DIMENSIONS

Length overall	41.3 metres
Length waterline	36.3 metres
Beam (moulded)	11.6 metres
Depth (moulded)	4.3 metres
Hull draft (approx.)	1.54 metres

PAYLOAD AND CAPACITIES

Passengers	214
Crew	6
Cargo	30 Euro pallets (1.2m x 0.8m @ 400kg each)
Fuel	16,600 litres
Maximum deadweight	47.7

PROPULSION

Main engines	2 x MTU 16V 4000 M70 2 x 2,320kW @ 2,000rpm
Gearboxes	2 x ZF 7550
Waterjets	2 x KaMeWa 71 S11

PERFORMANCE

Speed (25.7 t DWT, 85% MCR)	33 knots
Fuel consumption (approx.)	0.8 tonnes/hour

CLASSIFICATION

Det Norske Veritas
✦ 1A1 HSLC R2 (nor) Passenger EO
Norwegian Flag



AUSTAL 41

Vessel type: 41.3m High Speed Passenger-Cargo Catamaran

"SALTEN" & "STEGTIND"

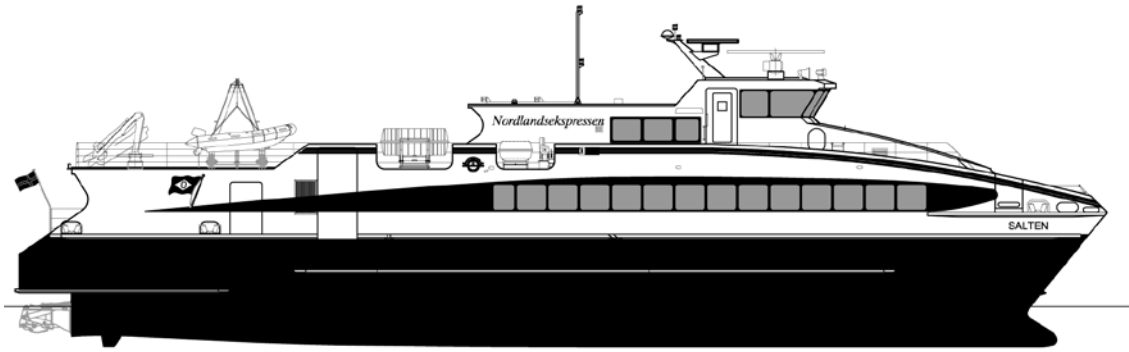
YARD NO: 242 & 243

DESTINATION: NORWAY

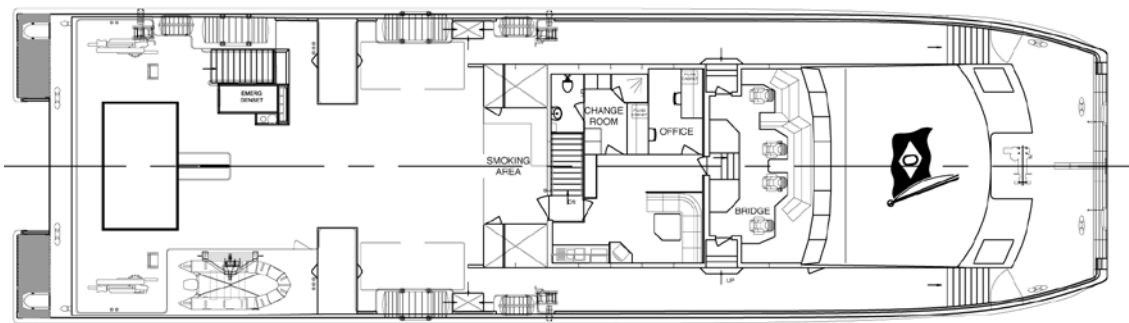
DELIVERED: MAY 2003

CLIENT: OVDIS

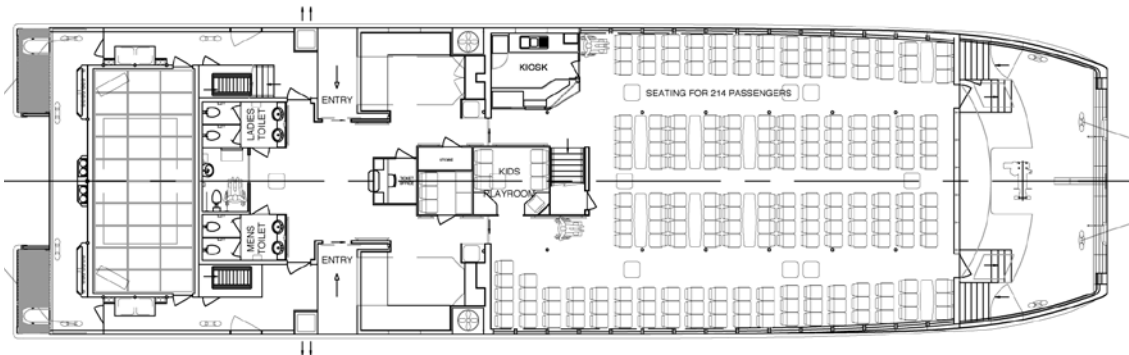
PROFILE



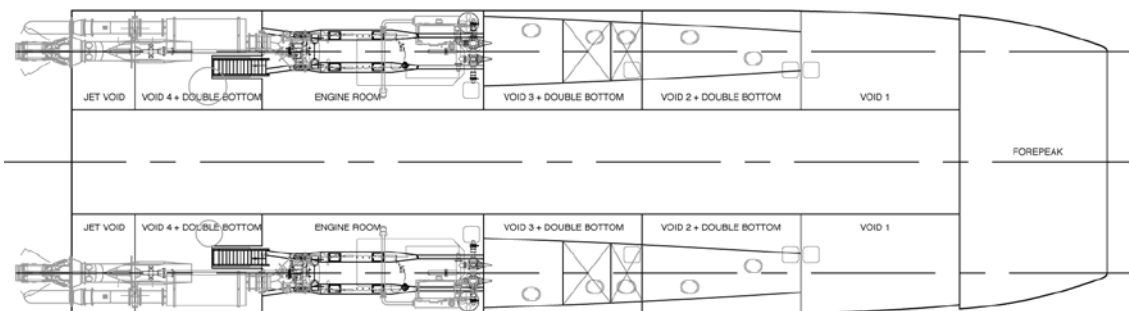
UPPER DECK



MAIN DECK



HULLS



100 Clarence Beach Road
Henderson
Western Australia 6166

Tel +61 8 9410 1111
Fax +61 8 9410 2564
sales@austal.com
www.austal.com

