

AUTO EXPRESS 113



“LEONORA CHRISTINA”

YARD NO : 246

DESTINATION : DENMARK

DELIVERY : 2011

CLIENT : NORDIC FERRY SERVICES

PRINCIPAL DIMENSIONS

Length overall	112.6 metres
Length (waterline)	101.3 metres
Beam (moulded)	26.20 metres
Hull depth (moulded)	8.50 metres
Hull draft (maximum)	4.85 metres

PAYLOAD AND CAPACITIES

Passengers	1,400
Crew	30 - 35
Vehicles	357 cars
Maximum axle loads:	
Double tyres	(one axle) 12 tonnes
Single tyre	(one axle) 9 tonnes
Vehicle deck clear height	4.50 metres
Maximum deadweight	1,000 tonnes
Fuel	160,000 litres

PROPULSION

Main engines	4 x MAN B&W 20V 28/33D 4 x 9,100 kW @ 1,000 rpm
Gearbox	Reintjes 7541
Waterjets	4x KaMeWa 125 SIIINP

PERFORMANCE (with Ride Control fitted)

Service speed (90% MCR)	37.6 knots
-------------------------	------------

CLASSIFICATION

Det Norske Veritas
 ✕ 1A1 HSLC R2
 Passenger Car Ferry A EO



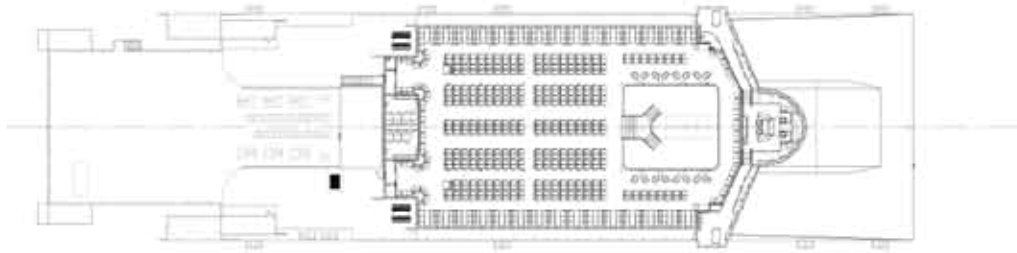
AUTO EXPRESS 113

Vessel type: 113m High Speed Vehicle-Passenger Catamaran

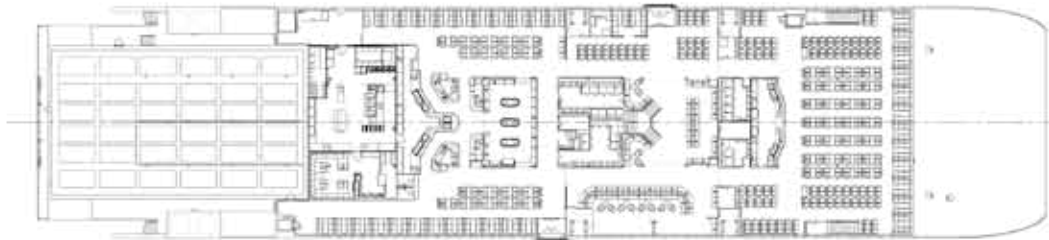
PROFILE



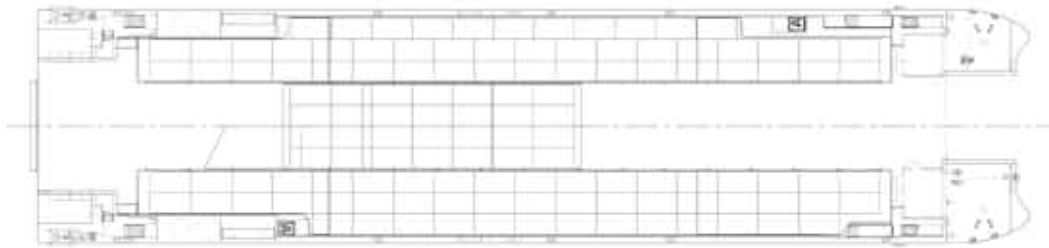
BRIDGE DECK



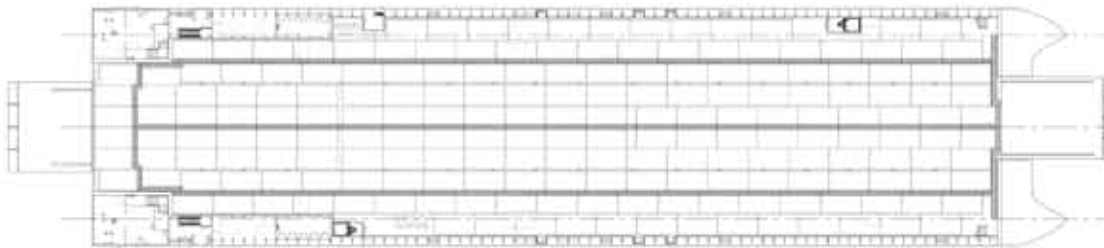
UPPER DECK



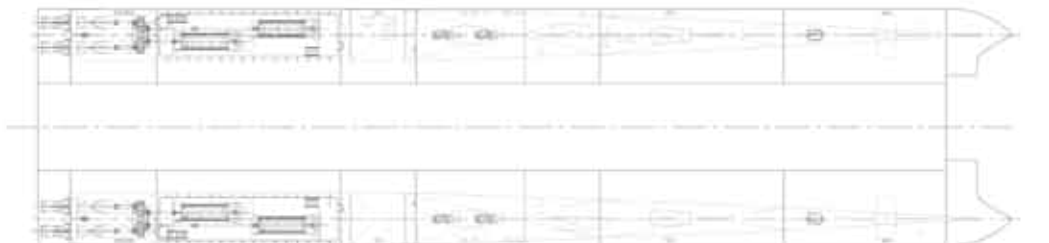
MEZZANINE DECK



MAIN DECK



HULLS



YARD NO : 246
"LEONORA CHRISTINA"

DESTINATION : DENMARK

DELIVERY : 2011

CLIENT : NORDIC FERRY SERVICES

SHIPS • SYSTEMS • SUPPORT

WWW.AUSTAL.COM

