

AUSTAL 37



PRINCIPAL PARTICULARS

Length Overall	37.2 m
Length Waterline (Approx)	34.2 m
Beam (Moulded)	10.7 m
Hull Depth (Moulded)	2.6 m
Draft (Approx)	1.3 m

PAYLOAD AND CAPACITIES

Passengers	292
Crew	3
Maximum Deadweight	32.66 tonnes

PROPULSION

Engine	2 x MTU 16V 2000 M70
Gearbox	2 x ZF BW 1900
Waterjet	2 x Hamilton HM651

PERFORMANCE

Speed (26.6t DWT, 90% MCR)	29.3 Knots
Fuel Consumption at Max. rating (approx.)	483 L/hr

CLASSIFICATION

Germanischer Lloyd



AUSTAL YARD NO: 247 & 275
"CESARIO VERDE" & "PEDRO NUNES"

DESTINATION: PORTUGAL

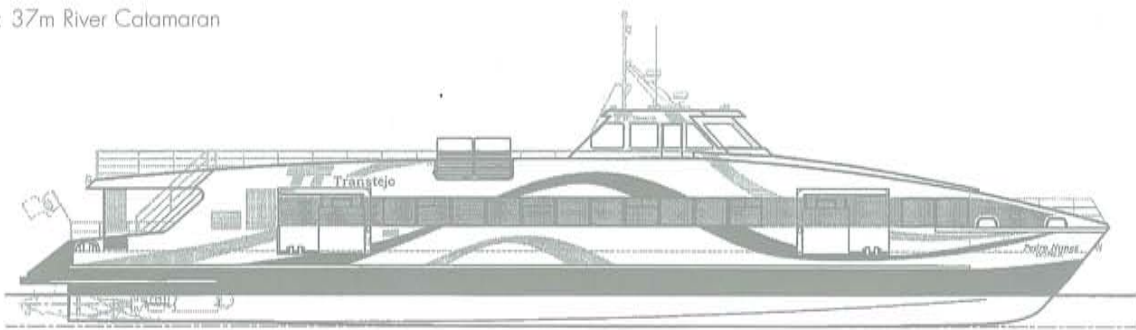
DELIVERED: MARCH 2002

CLIENT: TRANSTÉO

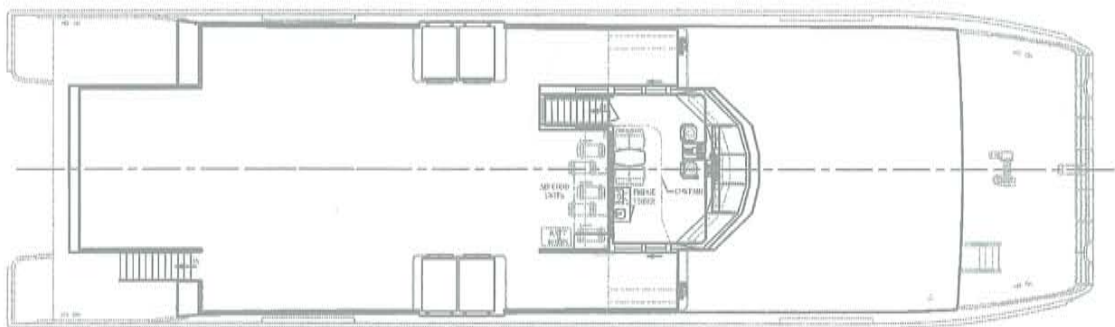
AUSTAL 37

Vessel Type: 37m River Catamaran

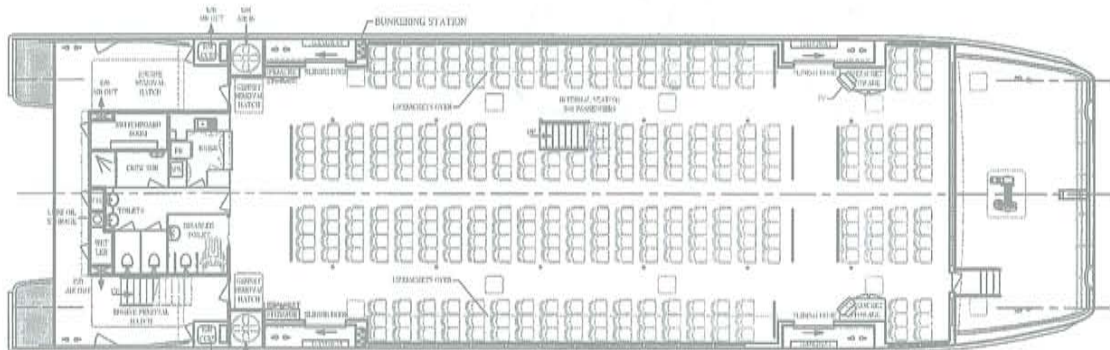
PROFILE



UPPER DECK



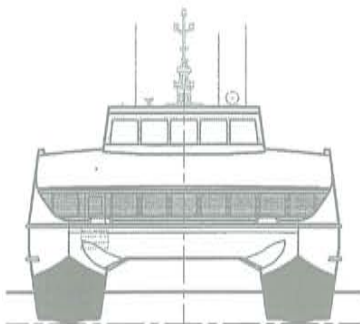
MAIN DECK



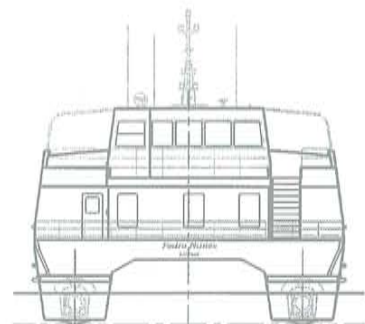
STARBOARD HULL



FRONT VIEW



REAR VIEW



"CESÁRIO VERDE" & "PEDRO NUNES"

AUSTAL YARD NO: 247 & 275

DESTINATION: PORTUGAL

DELIVERED: MARCH 2002

CLIENT: TRANSTEJO