

AUSTAL 47



“LIBERTY”

YARD NO : 250

DESTINATION : GUADELOUPE

DELIVERED : AUGUST 2011

CLIENT : SAS JEANS

PRINCIPAL DIMENSIONS

Length overall	47.0 metres
Length (waterline)	41.2 metres
Beam (moulded)	11.1 metres
Hull depth (moulded)	4.0 metres
Hull draft (maximum)	1.4 metres

PAYLOAD AND CAPACITIES

Passengers	437
Crew	7
Deadweight	60 tonnes
Fuel	16,000 litres

PROPULSION

Main engines	2 x MTU 16V 4000 M71 2 x 2,465 kW @ 1,970 rpm
Gearbox	2 x ZF 7650 NR2H
Waterjets	2 x Kamewa 71 SIII

PERFORMANCE

Speed (100% MCR)	34 knots
Range	Approx. 330 nm with 20% reserve

CLASSIFICATION

Bureau Veritas
 1 HULL MACH AUT-CCS, HSC-Cat A, Passenger
 French Flag



AUSTAL 47

Vessel type: 47m High Speed Passenger Ferry

“LIBERTY”

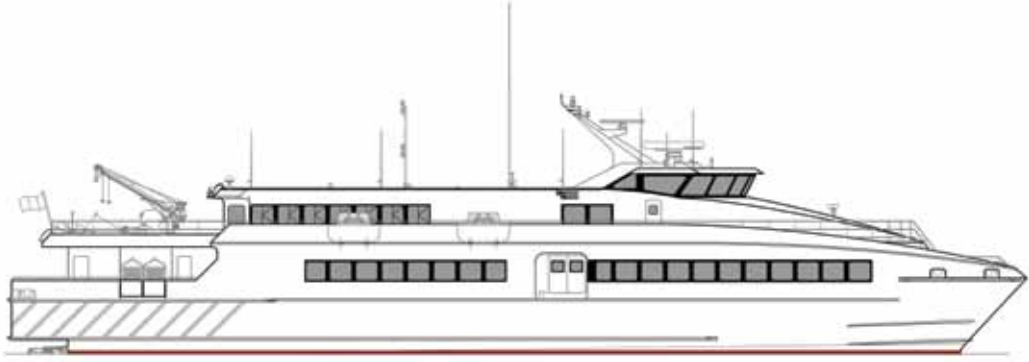
YARD NO : 250

DESTINATION : GUADELOUPE

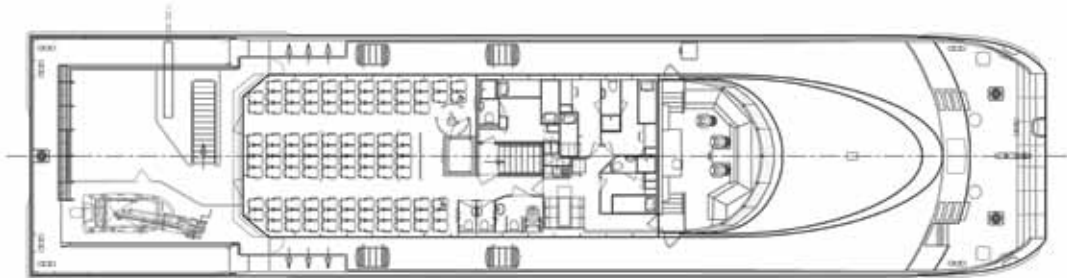
DELIVERED : AUGUST 2011

CLIENT : SAS JEANS

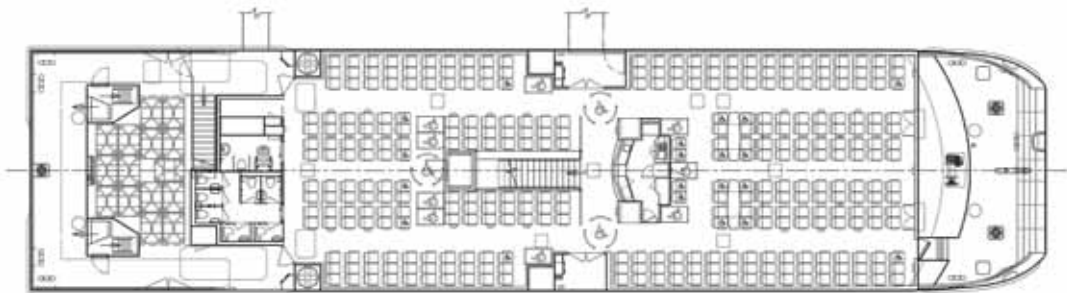
PROFILE



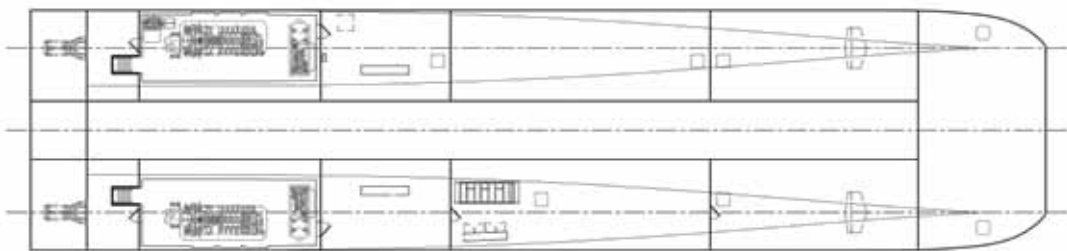
BRIDGE DECK



MAIN DECK



HULLS



SHIPS • SYSTEMS • SUPPORT

WWW.AUSTAL.COM

