

AUSTAL HSSV 113

CONCEPT
HIGH SPEED SUPPORT VESSEL



PRINCIPAL DIMENSIONS

Length Overall (Excluding Ramp)	113.1 metres
Beam (Moulded)	26.0 metres
Draft	4.7 metres
Material	Aluminium Alloy
Hull Form	Catamaran
Maximum Deadweight	575 tonnes

MISSION/LOGISTICS/FLIGHT DECK

Deck Area	1120m ²
Clear Height	4.6m
Flight Deck	1450m ²
Nominal Helicopter Capability	1 x CH-47 Chinook 2 x UH-60 Black Hawk

PERSONNEL DECK

Crew	17
Total Persons On Board	280

PROPULSION

Main Engines	4 x MTU 20V 8000 M91L
Propulsion	4 x Rolls Royce KaMeWa 140S3

PERFORMANCE

Endurance	14 days
Trial Speed	35.5 knots
Range at 12.0 knots	4,000 nautical miles

WEAPONS AND SENSORS

Weapons	1 x 57mm Mk 3 Gun 4 x 30mm Guns 1 x CIWS 2 x 4 Cell SSM
Combat System	6 x Console Combat Management System 2D Surveillance Radar 2 x C-Fire REO Fire Control Directors 1 x VIGILE LW Radar ESM 2 x Decoy Launchers



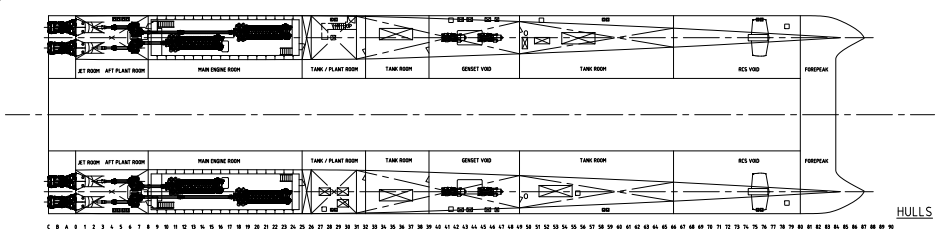
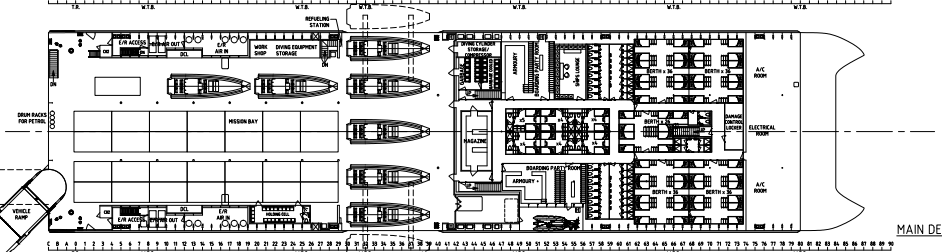
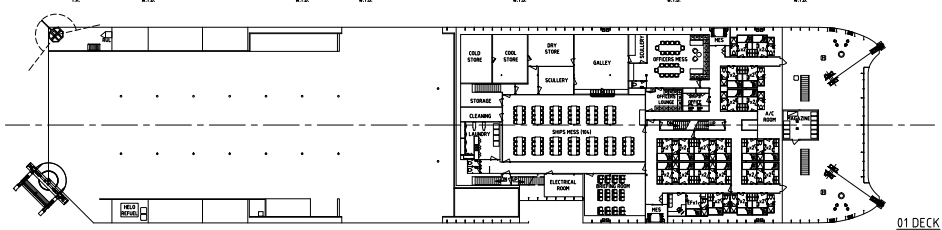
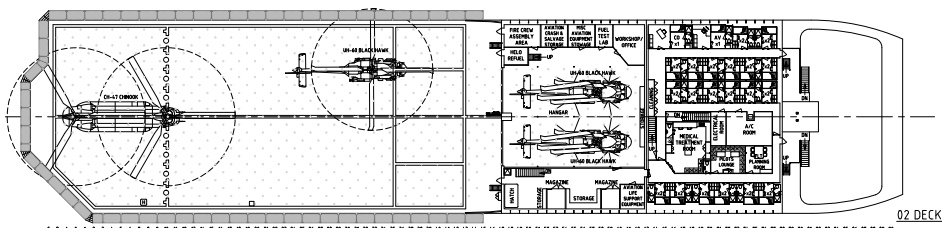
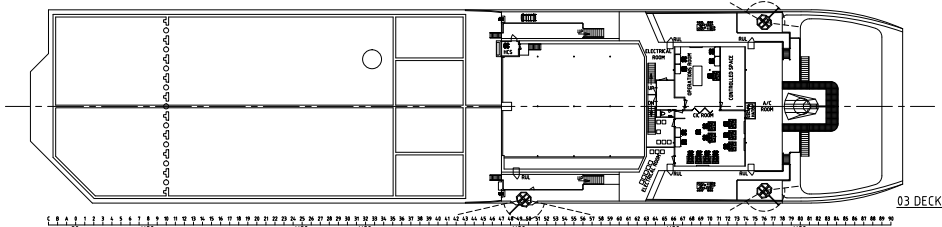
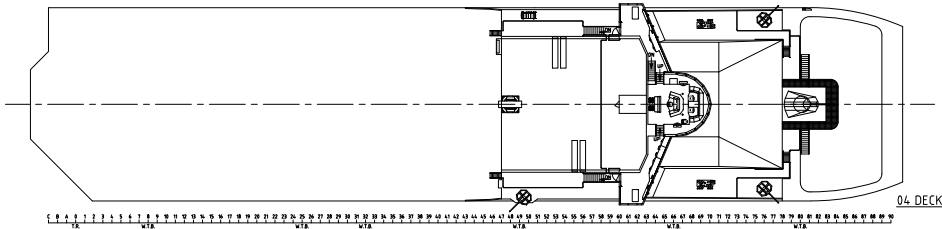
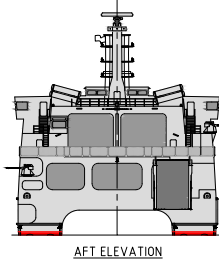
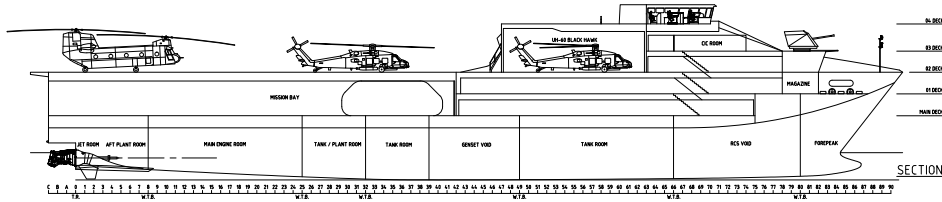
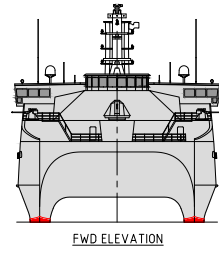
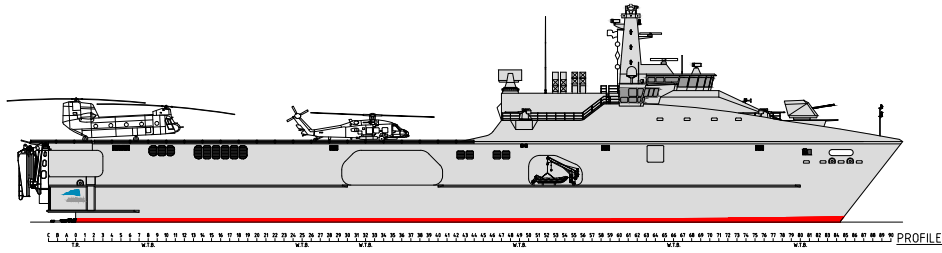
CAPACITIES

Vehicle Capacity	282 lane metres
Bi-Folding Slewing Ramp	13.5 x 4.2 metres
Boat Launch	PORT and STBD Telescopic Beam Crane system for simultaneous launch/ retrieval of up to 11m RHIBs

CLASSIFICATION

DNV or LLOYDS equivalent
1A1 HSLC Patrol EO HELDK-SHF
HSC 2000-Cargo-A

AUSTAL HSSV 113



CONCEPT
HIGH SPEED SUPPORT VESSEL