

# AUSTAL PATROL 40-A

GUARDIAN CLASS PATROL BOAT



## PRINCIPAL DIMENSIONS

Length overall	39.5 metres
Beam (overall)	8.0 metres
Draft, Loaded (approx.)	2.5 metres

## COMMUNICATION & SENSORS

Communication	VHF/DSC Radios, MF/HF DSC Radios, VHF Aeroband Radio, UHF Military Radio, Inmarsat C, SatCom, HF and VHF Radio Direction Finder
Navigation	X-Band Radar, Electronic Chart System, DGPS, Gyrocompass, Autopilot, Depth Sounder

## ACCOMMODATION

Berths	23
--------	----

## ARMAMENT

Primary	1 x 20mm Main Gun
Secondary	2 x 12.5mm Machine Guns (Forward) 1 x 20mm RWS (Aft)

## ADDITIONAL FEATURES

Ship's Boat	1 x Work Ribs (WRH635FRB) SOLAS approved Fast rescue boat for 15 persons @ 100kg Powered by 2x90hp outboard motors
Cargo Deck	16m² with lashing grid serviced by crane

## PROPULSION

Main engines	2 x Caterpillar 3516C 2 x 2000 bkW @ 1600 rpm
Gearboxes	2 x ZF 7600 (with trolling valves)
Propellers	2 x fixed pitch

## PERFORMANCE

Speed (SS4)	20 knots at 100% MCR
Range at 12 knots (SS4)	3,000 nm

## CLASSIFICATION

Lloyd's Register
✶ 100A1 SSC Patrol Mono HSC G6 MCH

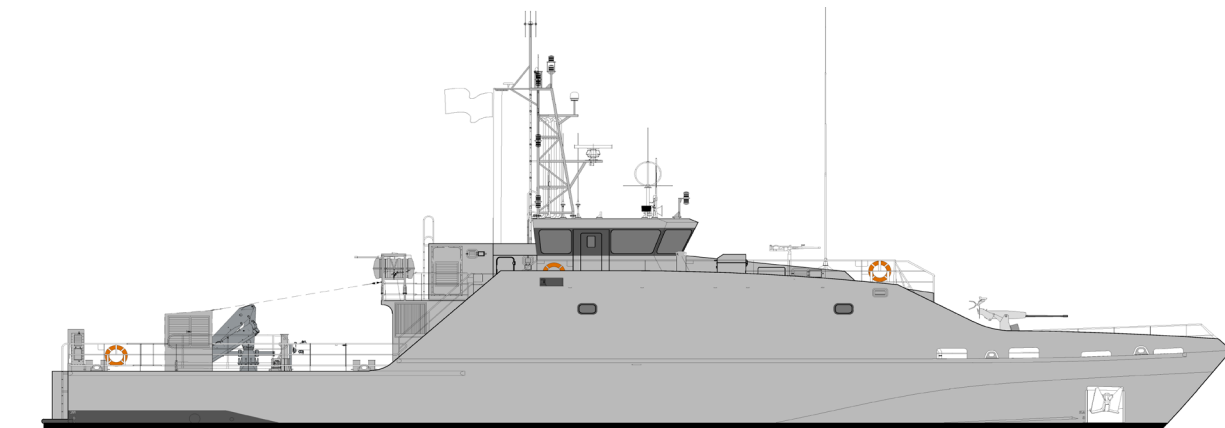


# AUSTAL PATROL 40-A

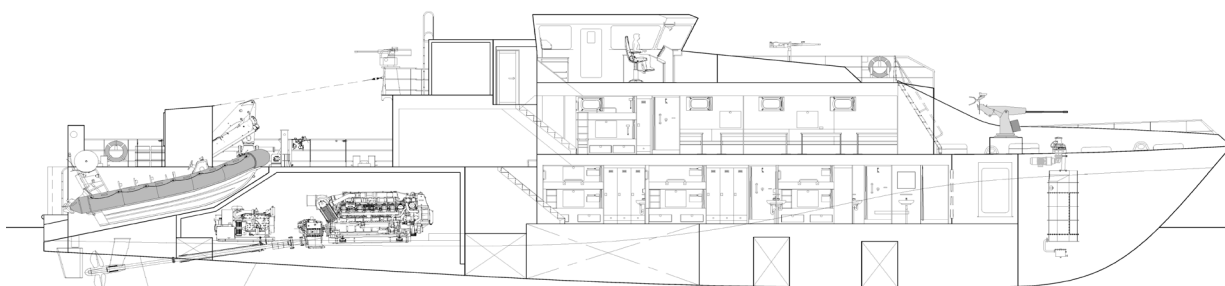
Vessel Type: Guardian Class Patrol Boat

GUARDIAN CLASS PATROL BOAT

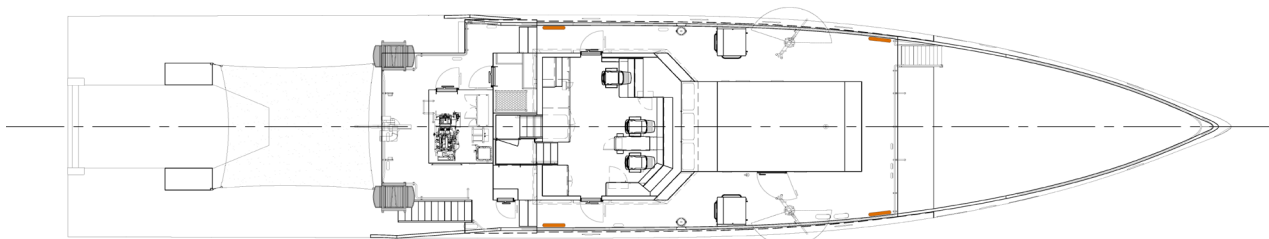
PROFILE



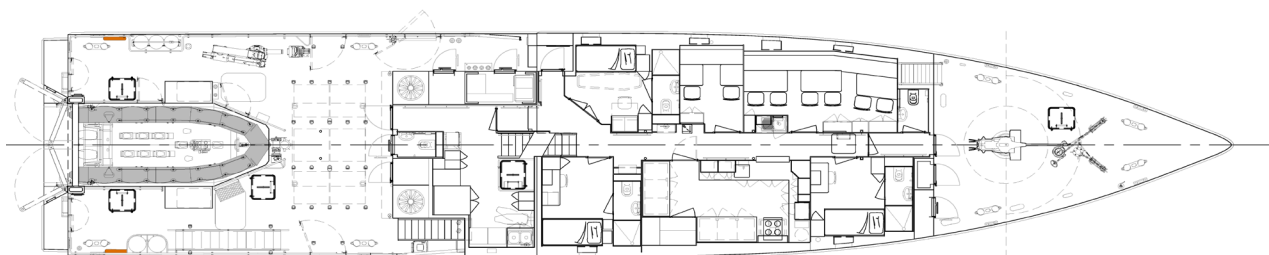
PROFILE @  
CENTRELINE



BRIDGE



MAIN DECK



LOWER DECK

