

# AUSTAL PATROL 58

EVOLVED CAPE CLASS PATROL BOAT



## PRINCIPAL DIMENSIONS

Length overall	57.8 metres
Beam (overall)	10.3 metres
Draft (approx.)	3.0 metres

## COMMUNICATION & SENSORS

Communication system	Secure/Non-secure voice and data over VHF, UHF, SATCOM and Sea Boat's Situational Awareness
Navigation	Integrated bridge system including: Radars, 2 x ECDIS, 2 x Gyro Compass, Secure AIS, 2 x DGPS, EOSS and VDR

## ADDITIONAL FEATURES

Sea boats	2 x 7.3 metre Gemini
Motion control system	Austal 2 x 3.25m² Roll fins, 2 x 4.5m² Trim Flaps

## PROPULSION

Main engines	2 x Caterpillar 3516C 2 x 2,525 kW @ 1,800 rpm
Gearboxes	2 x ZF 9055A
Propellers	2 x fixed pitch
Bow thruster	HRP 2001 TT(160 kW)

## PERFORMANCE

Speed	25 knots
Range at 12 knots	> 4000 nautical miles

## CLASSIFICATION

Det Norske Veritas  
✱1A1 LC, PATROL, EO, NV, BIS, RP, NAUT-HSC, ELT, RADHAZ, SAM



YARD NO: 811 - 818

DESTINATION: AUSTRALIA

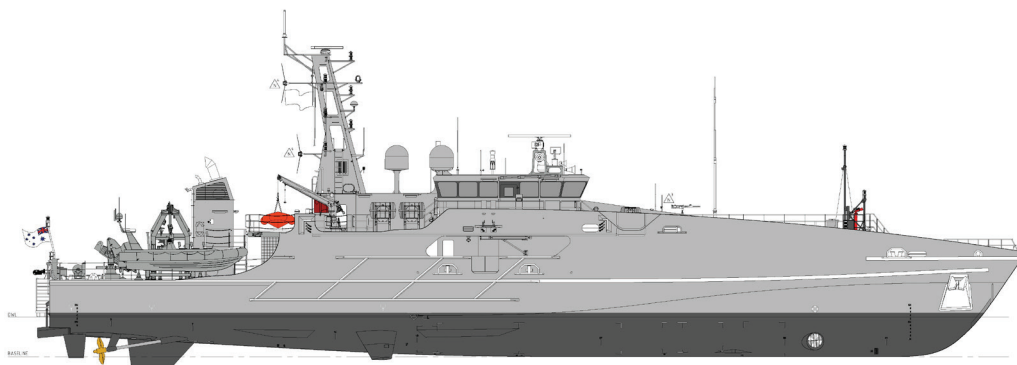
DELIVERY: 2022 - 2024

CLIENT: ROYAL AUSTRALIAN NAVY

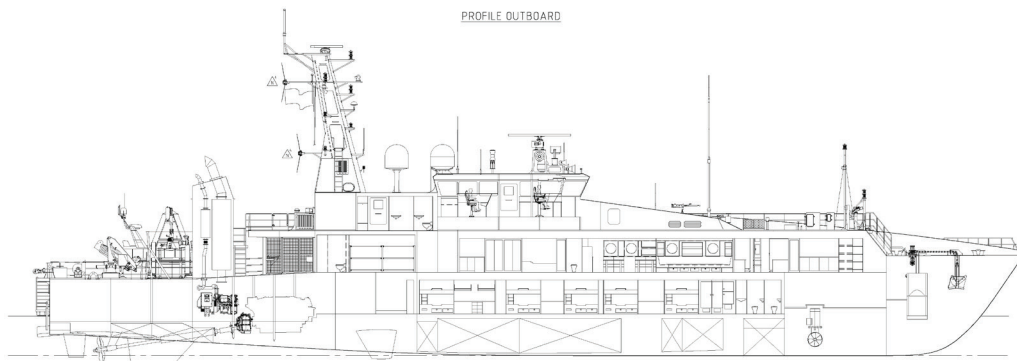


# AUSTAL PATROL 58

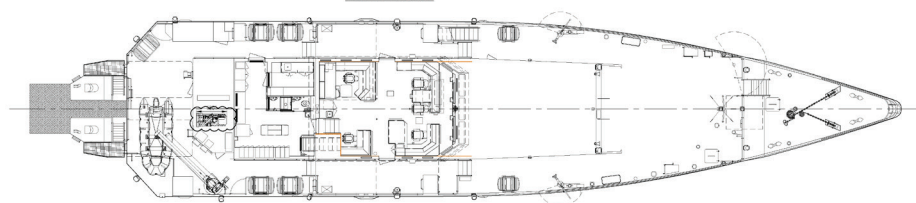
EVOLVED CAPE CLASS PATROL BOAT



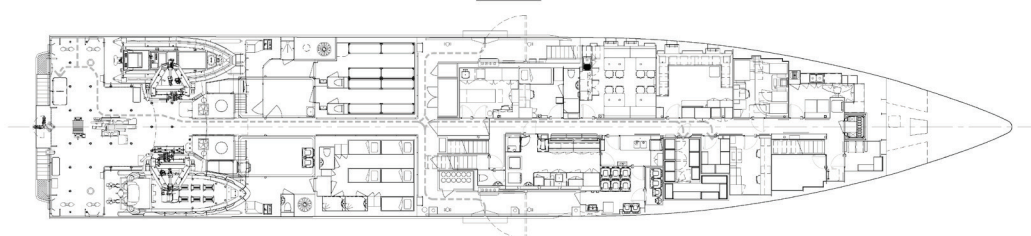
PROFILE OUTBOARD



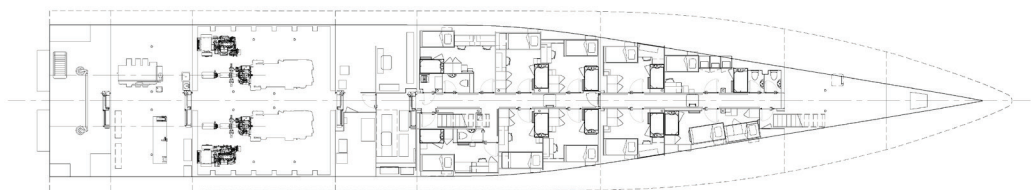
PROFILE INBOARD



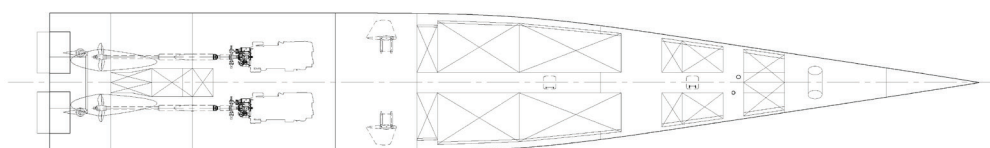
BRIDGE DECK



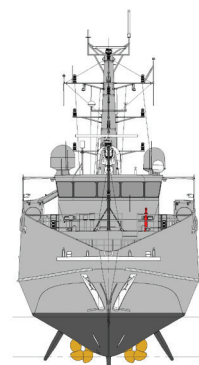
MAIN DECK



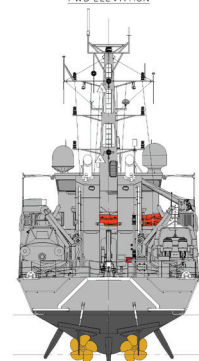
LOWER DECK



HULL



FWD ELEVATION



AFT ELEVATION

EVOLVED CAPE CLASS PATROL BOAT

YARD NO: 811 - 818

DESTINATION: AUSTRALIA

DELIVERY: 2022 - 2024

CLIENT: ROYAL AUSTRALIAN NAVY

100 Clarence Beach  
Road  
Henderson  
Tel +61 8 9410 1111  
Fax +61 8 9410 2564  
sales@austal.com  
www.austal.com

