

# Lifecycle Upkeep Sustainment Intelligence (LUSI™)

A leading security classified collaboration hub [PROTECTED] for class specific vessels, delivering reliable availability, driven by an intuitive and innovative sustainment operational intelligence layer.



## Major Client Challenges: Resolved



Legacy Data Foundation



Unstructured Information from Complex Data Taxonomies



Security Vulnerabilities in Obsolete Applications



Lack of Connected, Synchronised Operational Data



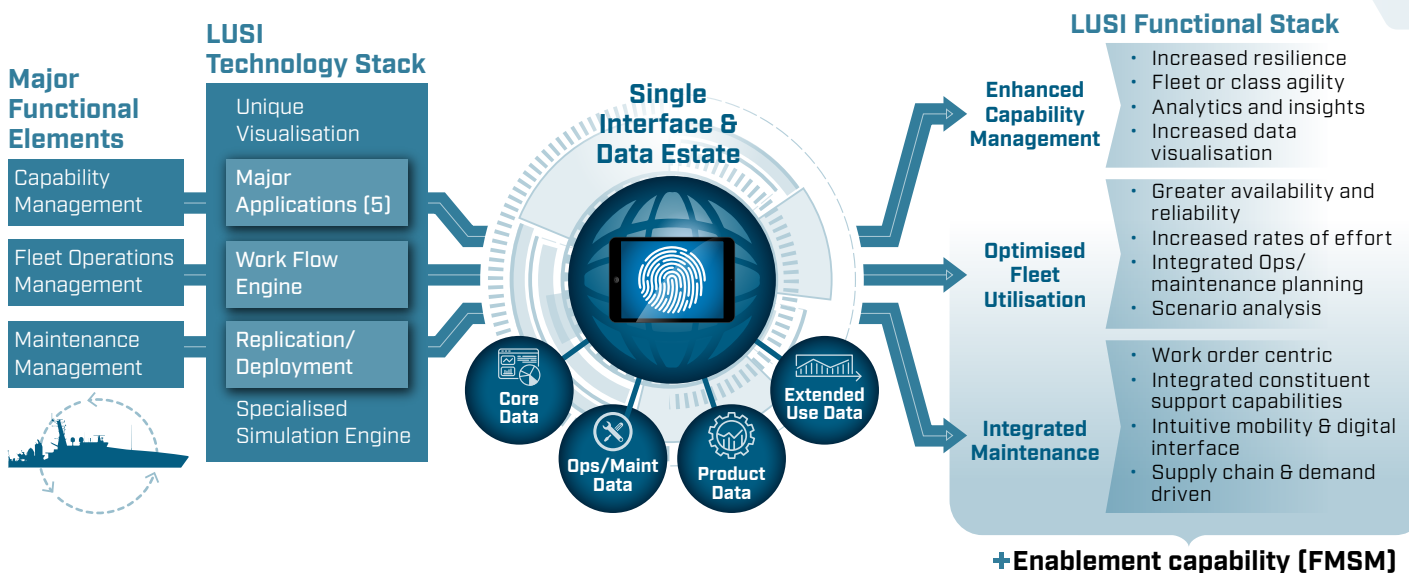
Limited Vessel & Fleet Intelligence

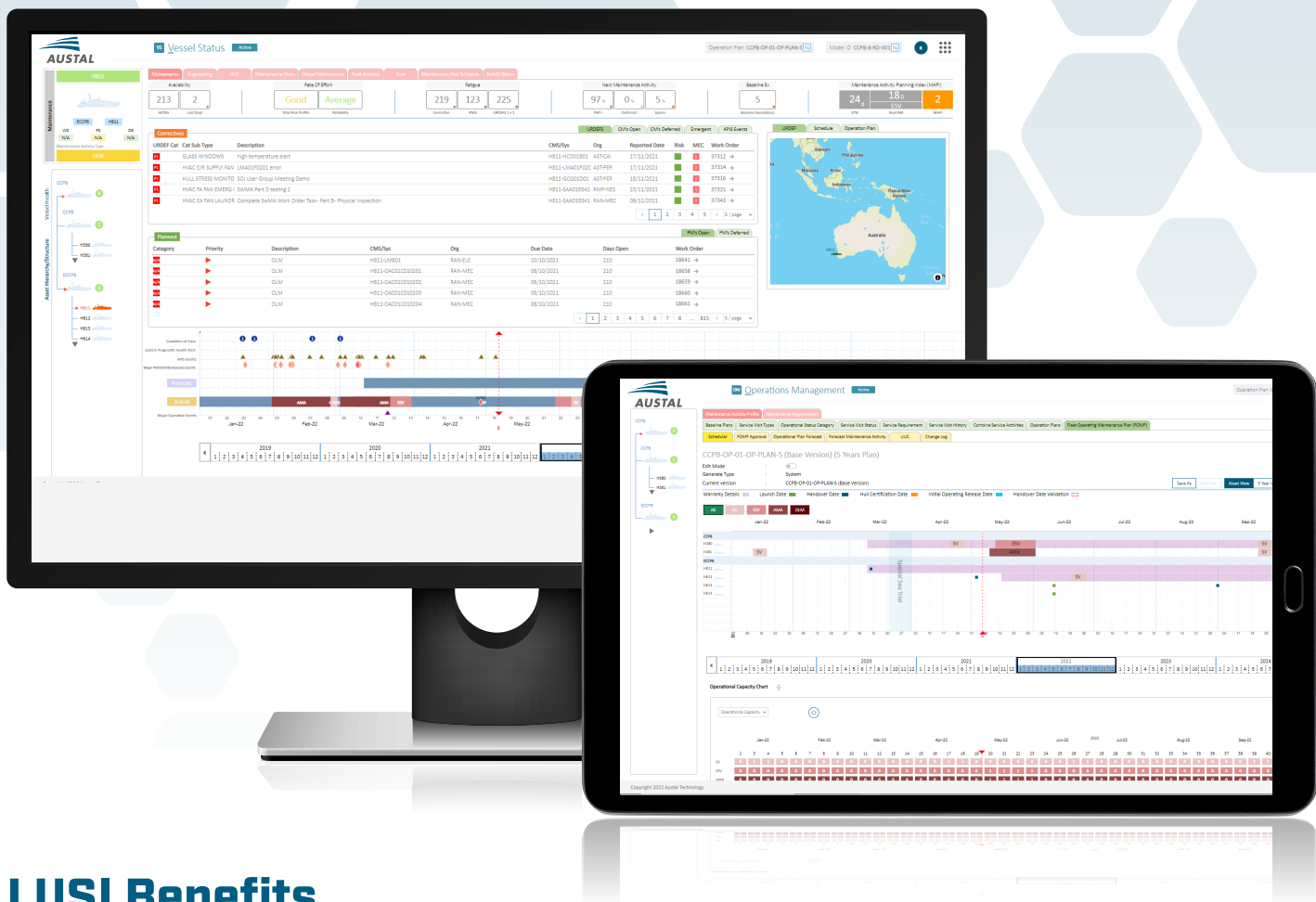


Disconnected Lifecycle Management

## LUSI embodies the future of maritime sustainment:

- ✓ Addressing the inter-relationships within its ecosystem, by seamlessly integrating Capability, Fleet Operations and Maintenance Management functions into a single platform.
- ✓ Providing powerful analytics for enterprise participants via a 'single interface & data estate'.
- ✓ Elevates data acquisition and management, transforming it into real-time intelligence for comprehensive asset and fleet oversight.
- ✓ Ensures data structure integrity and security in highly transactional settings,
- ✓ A robust foundation that enables the future harnessing of advanced data services such as AI and ML.
- ✓ **Reliable and real-time ship to shore synchronous communications.**





## LUSI Benefits

Offering a suite of innovative features that drive unparalleled benefits. Central to its design is the capability to transform data into meaningful, actionable insights, elevating fleet management from individual assets to a comprehensive fleet perspective.



**Cognitive Advantage:** By democratising transactional data, it ensures coherent fleet planning, and optimises individual vessel health.



**Enhanced Decision Making:** Through its sustainment analytics and visualisation, LUSI guarantees real-time vessel readiness, promoting seaworthiness and streamlined availability.



**Modern Data Handling:** With its next-gen applications, it overcomes outdated data constraints, harnessing Digital 4.0 technologies to minimise data inconsistencies.



**Strategic Fleet Management:** Integrated planning tools, specifically Austal Technology's LUSI engine, ensures fleet readiness and individual vessel availability aligned with the Fleet Operational Management Plan.

## Contact details

**Rod Bird**

**Head Austal Technology - Austal Australia**

**p:** +61 8 9410 1111 | **m:** +61 448 000 939 | **e:** rod.bird@austal.com | **w:** www.austal.com