



Prepare your ship for a digital future with the next generation control, monitoring and automation system featuring advanced cyber security.

Scan to see MARINELINK Prime in action.

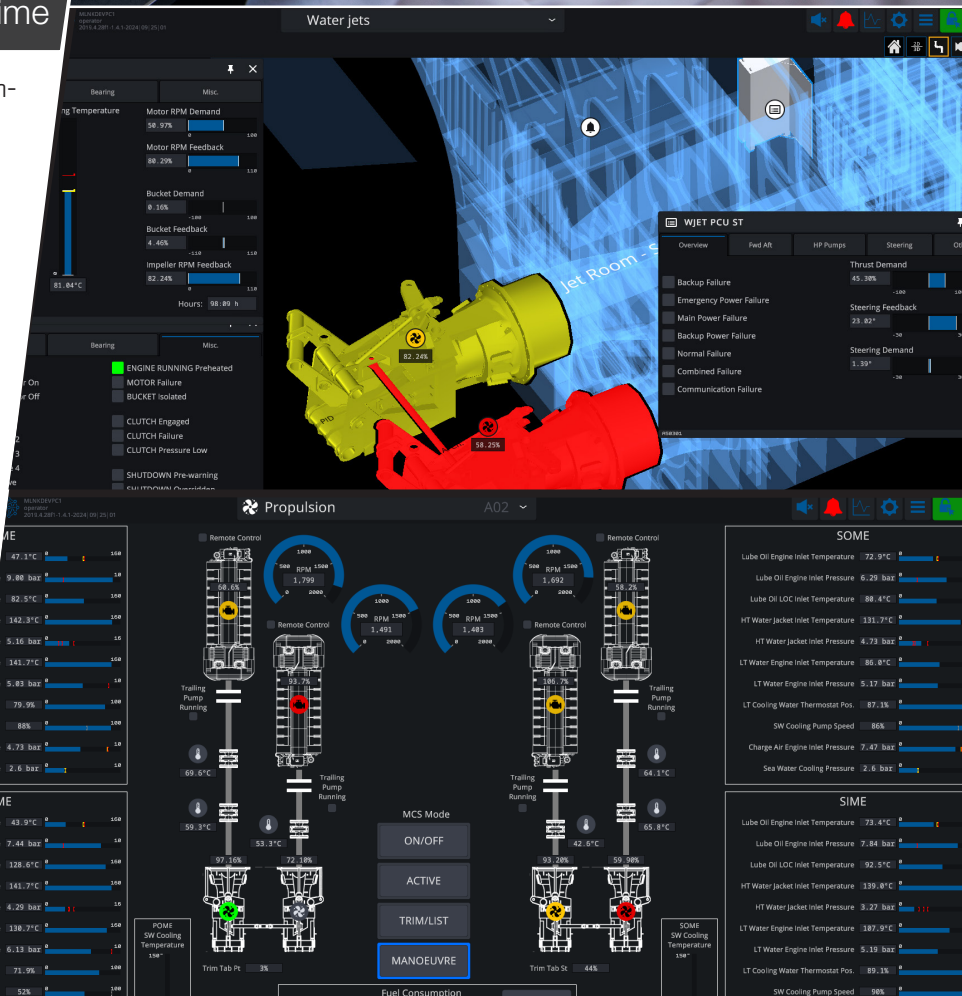


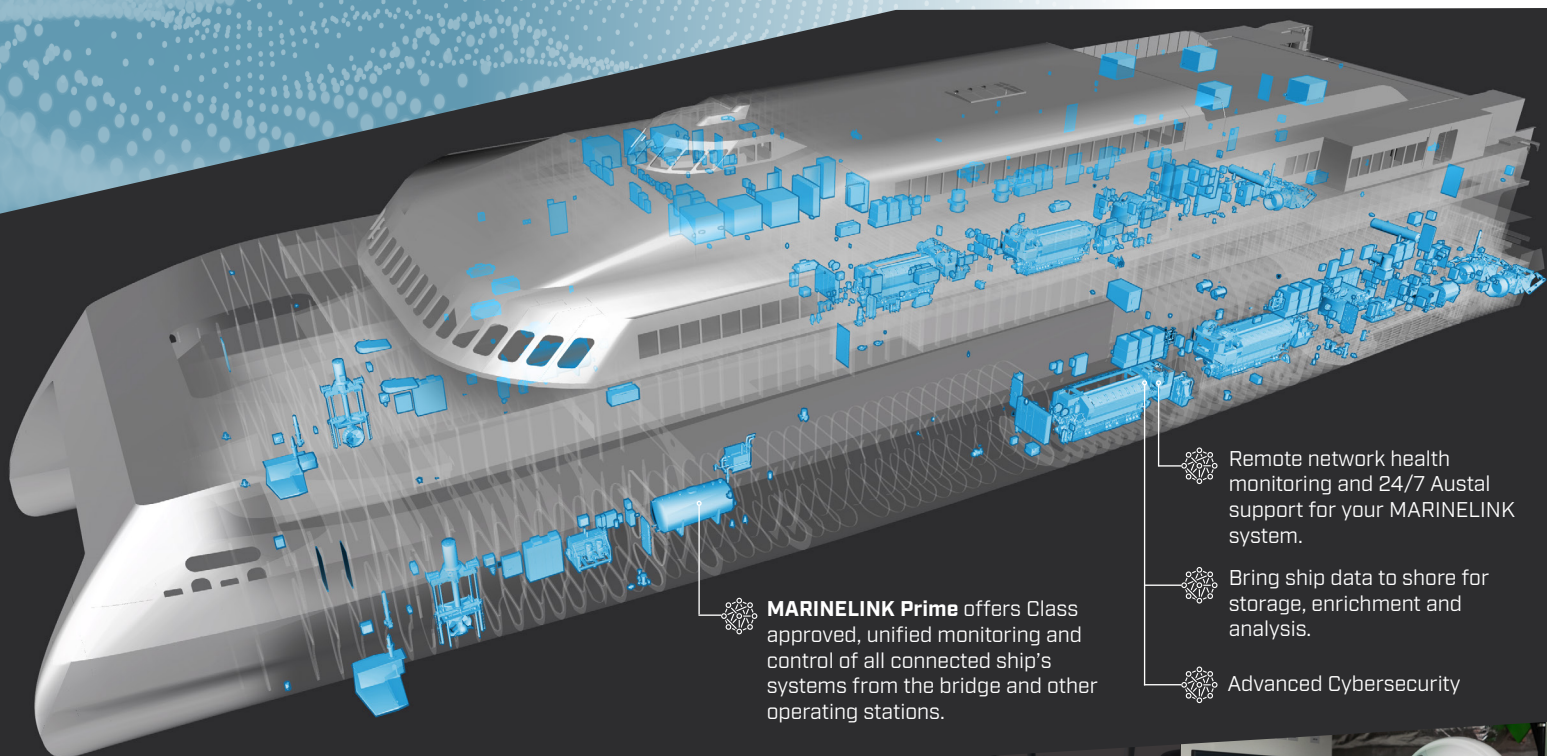
MARINELINK Prime

MARINELINK Prime is Austal's next generation on-board digital system. It delivers to ship operators a highly integrated monitoring and control, a modern user interface and seamless integration with other on-board and on-shore products in the **MARINELINK** suite.

Austal has been delivering powerful integrated monitoring, alarm and control (IMACS) systems for our clients since 1998. Over the last 25+ years we have been refining the user experience and consistently pushing the boundaries of control and alarm management. MARINELINK Prime is the culmination of this effort and experience.

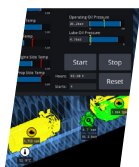
- » **MARINELINK Prime** breaks the boundaries of existing SCADA based systems, giving ship operators more direct control over their systems.
- » Class approved, Unified Control, Monitoring and Automation of all connected ship's systems from the bridge and other operating stations.
- » Industry leading 3D and 2D User Interface.





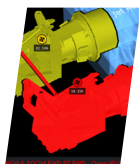
MARINELINK Prime offers Class approved, unified monitoring and control of all connected ship's systems from the bridge and other operating stations.

- Remote network health monitoring and 24/7 Austal support for your MARINELINK system.
- Bring ship data to shore for storage, enrichment and analysis.
- Advanced Cybersecurity



User Interface

A completely redesigned user interface provides a realistic 2D/3D or schematic representation of the ship for internal navigation; customizable equipment views, room based equipment views, light and dark modes, and a fully scalable UI.



Alarms

Notifications, alerts and popups intelligently direct the operator to the relevant physical and equipment location.



Manage All Ship Systems in One Place

Connected via a redundant process bus, crew can track information and send commands to equipment and systems from the bridge or any MARINELINK Prime location on the ship.



Simple to Maintain and Upgrade

MARINELINK Prime is built from Commercial Off The Shelf (COTS) hardware to provide a robust and widely available, tailored solution for your marine automation requirements.



Power Management

Optimise power generation to match consumption, whilst minimising fuel and maintenance costs. Integrate into any generator configuration and type, allowing great flexibility for vessel configuration.



Prepare your ship for a digital future with these MARINELINK Prime benefits:

- » **Reduce risks to vessel availability** during its operating season. Peace of mind from remote support and network health monitoring.
- » **Remove existing equipment obsolescence risks.** Remove the dependency on legacy hardware and software.
- » **Achieve compliance with latest cyber security standards.** MARINELINK Prime is built around the industry standard OPCUA communication protocol and is compliant with the latest IMO cyber security standards Resolution MSC 428 (98) – Maritime Cyber Risk.
- » **Improve the safety and efficiency** of the on-board engineering team with the new, simplified user interface.
- » **Data** is readily used for **analysis, fault finding and vessel optimisation.**

Rev 1.0 10-24