

# AUSTAL OFFSHORE PATROL 60

## SUBSURFACE VARIANT



PRINCIPAL DIMENSIONS	
Hull material	Steel
Length overall	60.0 metres
Beam (overall)	10.6 metres
Draft (approx.)	3.0 metres

COMMUNICATION & SENSORS	
Communication system	Secure/Non-secure voice and data over VHF, UHF, SATCOM and Sea Boat's Situational Awareness
Navigation	Integrated Bridge System including: Radars, 2 x ECDIS, 2 x Gyro Compass, Secure AIS, 2 x DGPS, EOSS and VDR
Sonar	Hull Mounted Mine Avoidance Sonar and Towed Array Sonar (Towed Reelable Active Passive Sonar (TRAPS))

ADDITIONAL FEATURES	
Motion control system	Austal 2 x 3.25m <sup>2</sup> Roll fins, 2 x 4.5m <sup>2</sup> Trim Flaps
Combat Information System	CIC room with 4 consoles

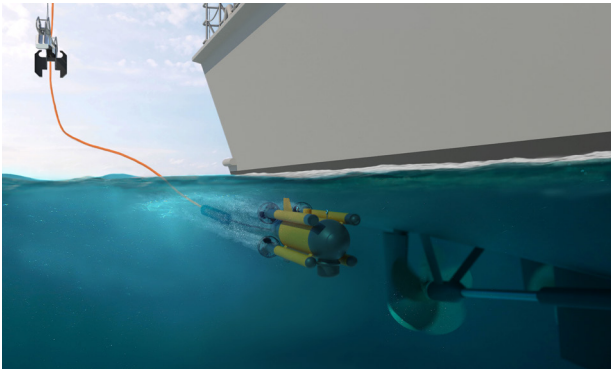
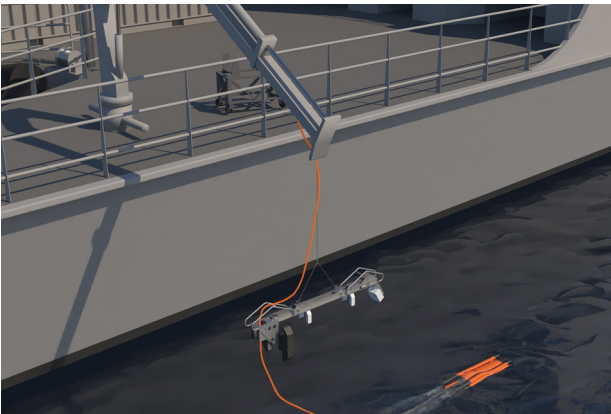
DEPLOYABLE MISSION SYSTEMS	
Sea boats	1 x 6.35m WorkRibs Fast Rescue Boat (15pax)
Unmanned Vehicles	Aft flight deck accommodates compact to mid-sized Vertical Takeoff and Landing and fixed wing Unmanned Air Systems Aft deck also accommodates Mine Detection Unmanned Underwater Vehicle(s)

WEAPONS AND COUNTERMEASURES	
Primary	2 x 12.5mm Machine Guns (forward)
Countermeasures	Water Cannon and Drone Countermeasure System

PROPULSION	
Main engines	2 x Caterpillar 3516C or similar
Gearboxes	2 x ZF 9055A or similar
Propellers	2 x fixed pitch
Bow thruster	HRP 2001 TT(160 kW) or similar

PERFORMANCE	
Speed	23.5 knots
Range at 12 knots	2500 nautical miles

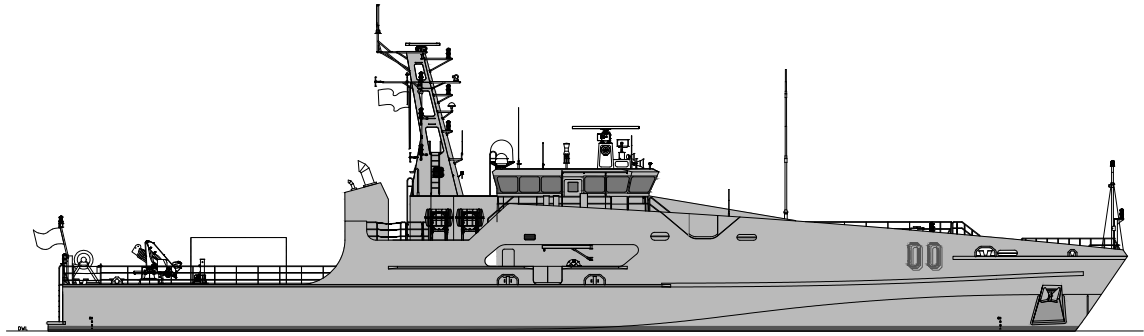
CLASSIFICATION	
Det Norske Veritas	
1A1 LC, PATROL, EO, BIS, RP, NAUT-HSC, RADHAZ, SAM	



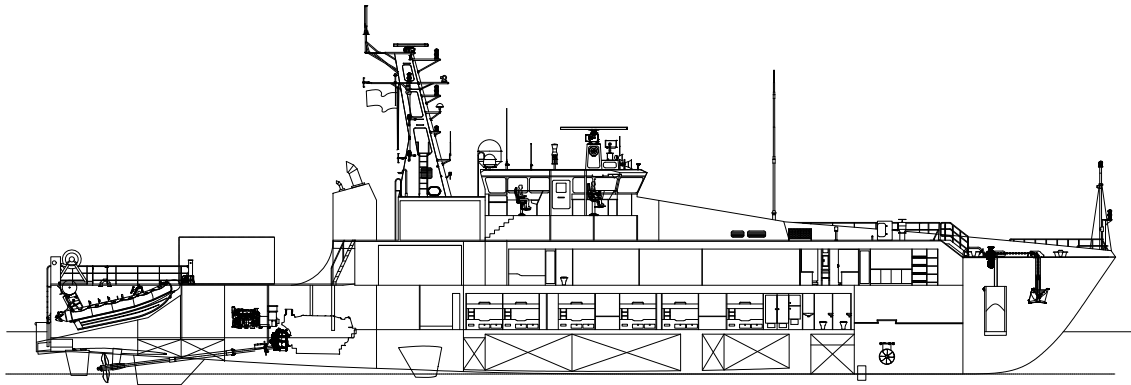
# AUSTAL OFFSHORE PATROL 60

## SUBSURFACE VARIANT

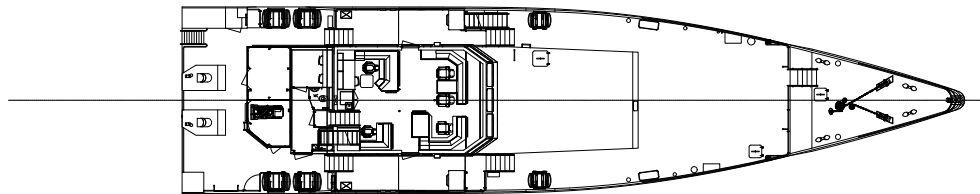
PROFILE



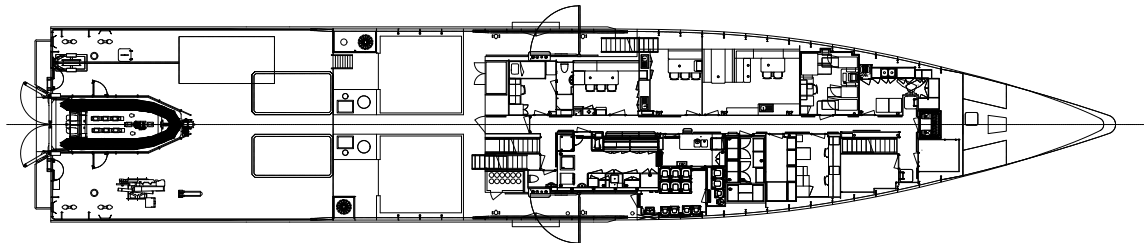
PROFILE @  
CENTRELINE



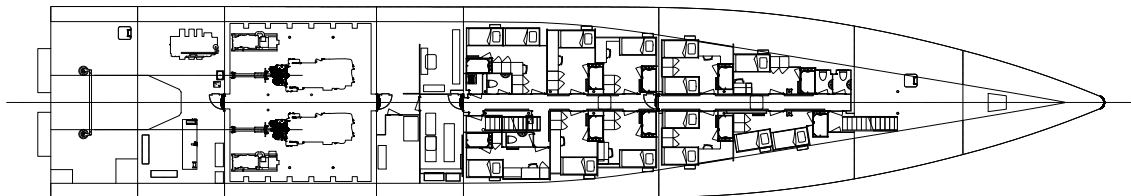
BRIDGE DECK



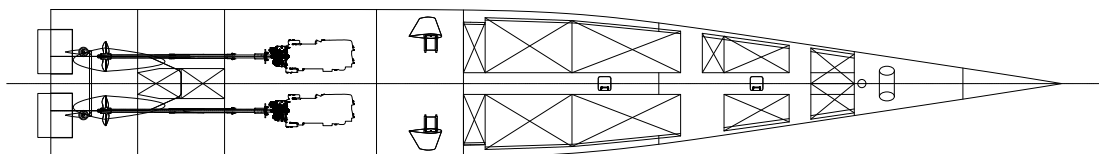
MAIN DECK



LOWER DECK



HULL



*Subsurface variant shown with two engines fitted as standard*