

OFFSHORE PATROL 83

OFFSHORE PATROL VESSEL



PRINCIPAL DIMENSIONS

Length overall	83.4 metres
Length (waterline)	79.2 metres
Beam (moulded)	13.3 metres
Hull depth (moulded)	6.5 metres
Hull draft	4.0 metres

COMMUNICATION & SENSORS

HF, VHF, UHF & SATCOM communications, Combat Management System, Radar Electro Optical Director, 2D air/surface radar & IFF, Radar ESM, and capacity for active/passive sonar towed array

ACCOMMODATION

Berths	52
Additional	20

ARMAMENT

76mm main gun, 2 x 25mm Remote Weapon System (RWS), and mounts for 2 x .50 Cal Heavy Machine Guns at midships

ADDITIONAL FEATURES

Flight Deck	Helicopter landing and take-off capability to suit 10 tonne helicopter (nominally AW159) and capacity for UAS
Ship's Boats	11m RHIB/sea boat in stern launch dock 7m RHIB/sea boat side launch

PROPULSION

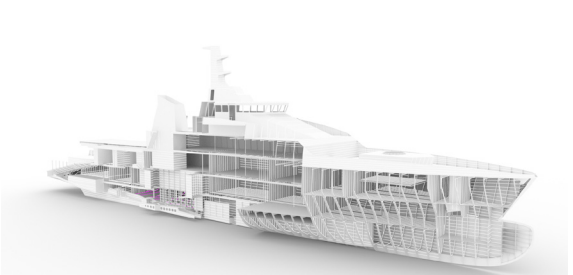
Main engines	2 x Caterpillar C280-16 or similar
Gearboxes	2 x Reintjes LAF 5645 SISD or similar
Propellers	2 x Fixed Pitch Propellers (FPP)

PERFORMANCE

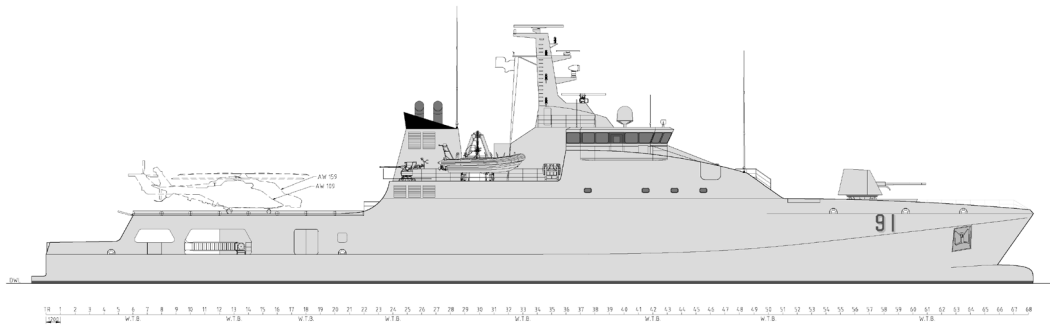
Speed	22 knots at 85% MCR
Range	>3,500 nm (at a cruising speed of 12 knots)

CLASSIFICATION

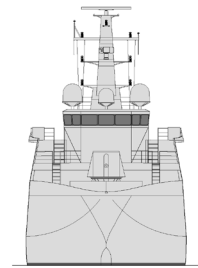
Lloyd's Register
✶100A1 NS(SSC) Mono (Offshore Patrol Vessel) SA2, AIR



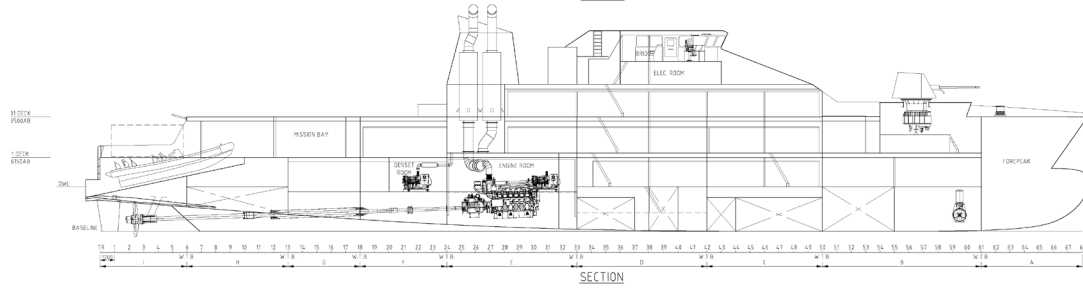
OFFSHORE PATROL 83



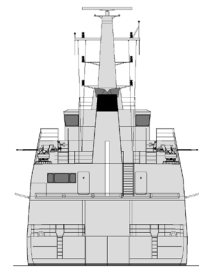
PROFILE



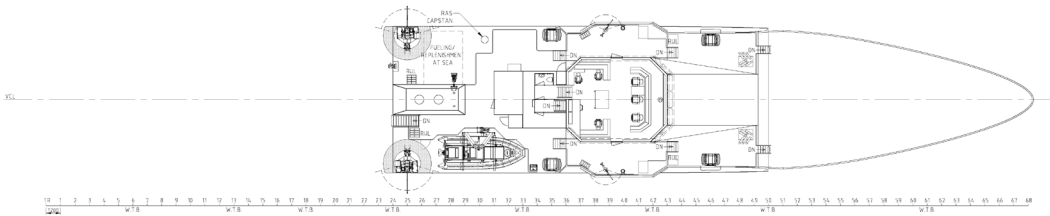
FWD ELEVATION



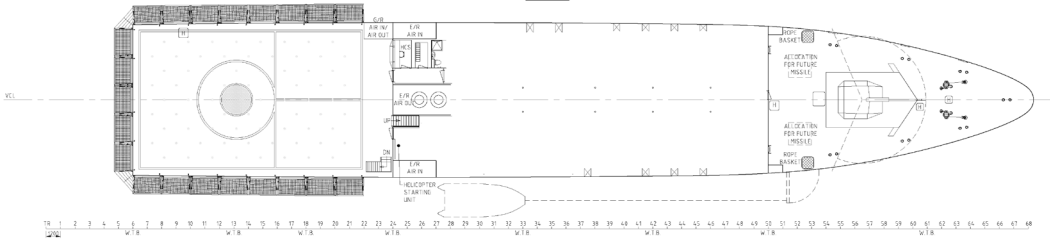
SECTION



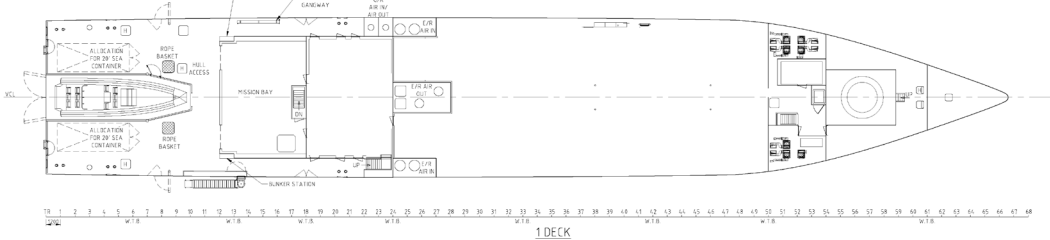
AFT ELEVATION



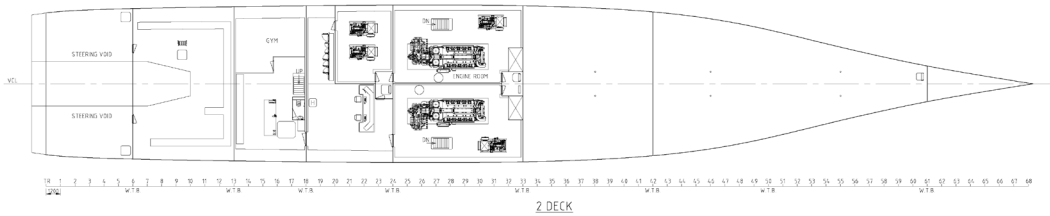
02 DECK



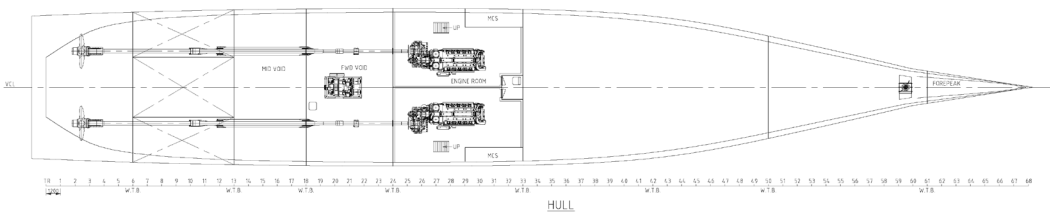
01 DECK



1 DECK



2 DECK



HULL