

AUSTAL QUEENSLAND BRISBANE & CAIRNS SHIPYARDS

SIMOLAI
Technology

AUSTAL

MBH 1120
Max 1120t



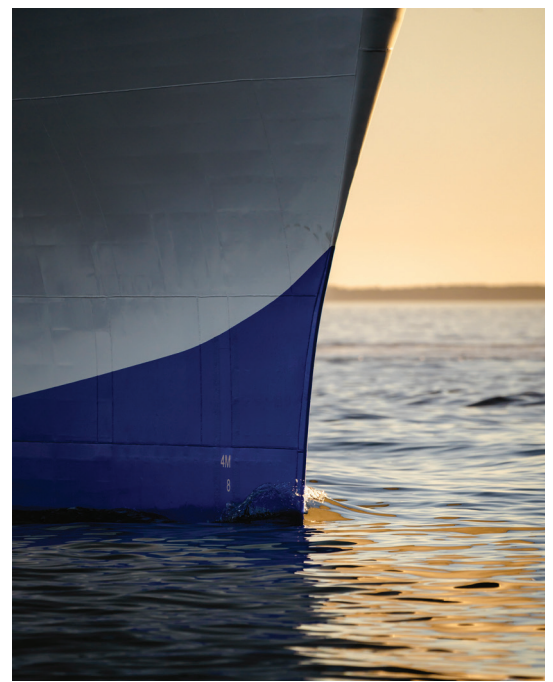
AUSTAL

ABOUT AUSTAL

Austal is Australia's global shipbuilder, Defence prime contractor and maritime technology partner of choice; designing, constructing and supporting defence, commercial and private vessels for the world's leading operators.

For over 32 years, Austal has designed and constructed over 340 vessels for over 121 operators in 59 countries, gaining an enviable reputation for innovative shipbuilding and servicing using advanced technologies and modern techniques.

From shipyards located in Australia, the USA, the Philippines and Vietnam – and service centres located around the world – Austal offers Defence, commercial and private vessel operators the highest quality ships, systems and support.



AUSTAL QUEENSLAND

Austal Queensland has been formed by the expansion of Austal's shipbuilding and sustainment facilities and teams in Cairns and Brisbane, Queensland, Australia. Through two strategically located sites, Austal Queensland offers industry-leading service and support including vessel maintenance, repairs and re-fits for Defence, commercial and private operators.

Featuring the Pacific regions largest Mobile Boat Hoist (MBH), capable of lifting 1,120 tonnes, Austal Cairns is well placed to service a diverse range of vessels, from luxury superyachts to commercial fishing vessels and naval patrol boats. Austal Brisbane is one of the largest capacity shipyards in Eastern Australia and with a 2,500 tonne rail slipway can service vessels up to 100 metres LOA.

Austal Queensland has an experienced team of more than 100 professionals in Cairns and Brisbane, with specialist skills in marine engineering and technical trades, following ISO quality-assured processes and using the latest technology, plant and equipment to deliver the highest quality service to more than 120 customers from throughout Australia and around the world.





VESSELS SERVICED

Defence

Austal Queensland provides a variety of in-service support and sustainment services to the Commonwealth of Australia (Department of Defence), the Royal Australian Navy and Australian Border Force on Armidale, Cape and Guardian-class Patrol Boats; designed and constructed by Austal in Australia. With DEFAUST5000 accreditation, Austal Cairns currently supports a growing fleet of Australian and Pacific Island nation patrol boats, operating throughout Northern Australia and the South Pacific.



Commercial

Austal Queensland provides support to a variety of commercial operators and diverse vessel types including tugboats, workboats, offshore support vessels, tourist ferries and cruise boats, fishing boats and barges.



Superyachts

Austal Queensland is ideally located, equipped and qualified to support superyacht owners and charter operators of large, luxurious vessels (20 – 60 metres LOA), from Australia, South East Asia and the Pacific, requiring specialist support.

CAIRNS SHIPYARD

Austal Cairns Shipyard is established in the Portsmith area of Cairns with extensive service facilities to provide a full range of support to defence, commercial and private (superyacht) customers.

Featuring over 200 metres of fitting out berths, including 80 metres of floating wharf space and a 1,200 tonne slipway for vessels up to 60 metres length overall, Austal Cairns also offers the Pacific regions' largest mobile boat hoist, with a 1,120 tonne lift capability.

The shipyard includes 2 x 1,120 tonne and 2 x 600 tonne hardstands, and 2 x mobile cranes (20 and 70 tonne).

A full range of engineering support services and facilities are available, delivered by experienced technicians following ISO 9001:2015 quality assurance systems, certified to DNV and LR standards.

Services available include vessel contract maintenance, engineering design, machining and repairs, hydraulics management, welding and fabrication, electrical systems maintenance and repairs, marine plumbing, refrigeration and air-conditioning maintenance, painting and blasting, interior refits repairs and maintenance, regulatory compliance testing and audits.

Austal Cairns is delivering in-service support and sustainment to Australia's Cape-class Patrol Boat fleet (currently 10 vessels); while also providing support to the new Guardian-class Patrol Boat fleet (a total of 21 vessels to be delivered by 2023), operated by Australia's Pacific Island neighbours and Timor Leste.

The shipyard has a long history of servicing defence, commercial and private vessels (superyachts) with shipyard operations since 1970 repairing over 3,000 vessels in that time; engaging hundreds of local Queensland-based suppliers and businesses to ensure vessels maintain their operational profile and availability.



Mobile Boat Hoist Specifications

(24/7 slipping capability)

- 1,120 tonne
- 17.5 metre beam
- 6+ metre draft



BRISBANE SHIPYARD

Austal's Brisbane Shipyard is conveniently located on the Brisbane River at Colmslie, and as one of the largest capacity shipyards on the east coast of Australia, offers a 2,500 tonne slipway that can service commercial and private vessels up to 100 metres LOA and 22 metre beam.

The facility includes fully equipped, on-site fabrication and engineering workshops that can undertake any kind of vessel maintenance, repairs or refit, with a skilled team that has completed over 500 dockings over the past 30 years.

Austal Brisbane is suitable for a wide variety of vessel servicing; including (class approved) hull and structural repairs, surface preparation and application of protective coatings, vessel contract, engineering design, machining and repairs, hydraulics management, welding and fabrication, electrical systems maintenance and repairs, marine plumbing, refrigeration and air-conditioning maintenance, painting and blasting, interior refits repairs and maintenance, regulatory compliance testing and audits.

Aligning with Austal's network of service centres around Australia, the Brisbane Shipyard holds ISO 9001:2015 quality assurance systems certification, to DNV and LR standards.



SERVICES

Maintenance, Repairs and Refits

As an experienced Defence prime contractor, Austal Queensland can deliver comprehensive in-service support programs for Defence vessels, with proven experience providing technical engineering support and depot level maintenance to ensure ongoing availability and operability of various maritime assets.

Austal Queensland applies the same meticulous attention to detail on both commercial vessels and luxury private yachts ensuring maintenance, repairs and refit services are delivered to the highest standard with every docking.

Scheduled maintenance programs can be tailored to suit individual vessel or fleet requirements and delivered by an experienced team of Austal

engineers and technicians in Cairns or Brisbane; or by an authorised, quality assured Austal partner. Unscheduled maintenance and advice on insurance spares can also be factored in to any contract for a complete solution.

With large, undercover maintenance facilities available, Austal Queensland can complete maintenance, repairs and refits on vessels 24/7, throughout the year, regardless of the weather; and with multiple slipping and docking facilities, 300 metres of berthing space and the Pacific's largest mobile boat hoist, Austal Queensland has the space, the infrastructure and the expertise to accommodate any vessels up to 100 metres length overall.



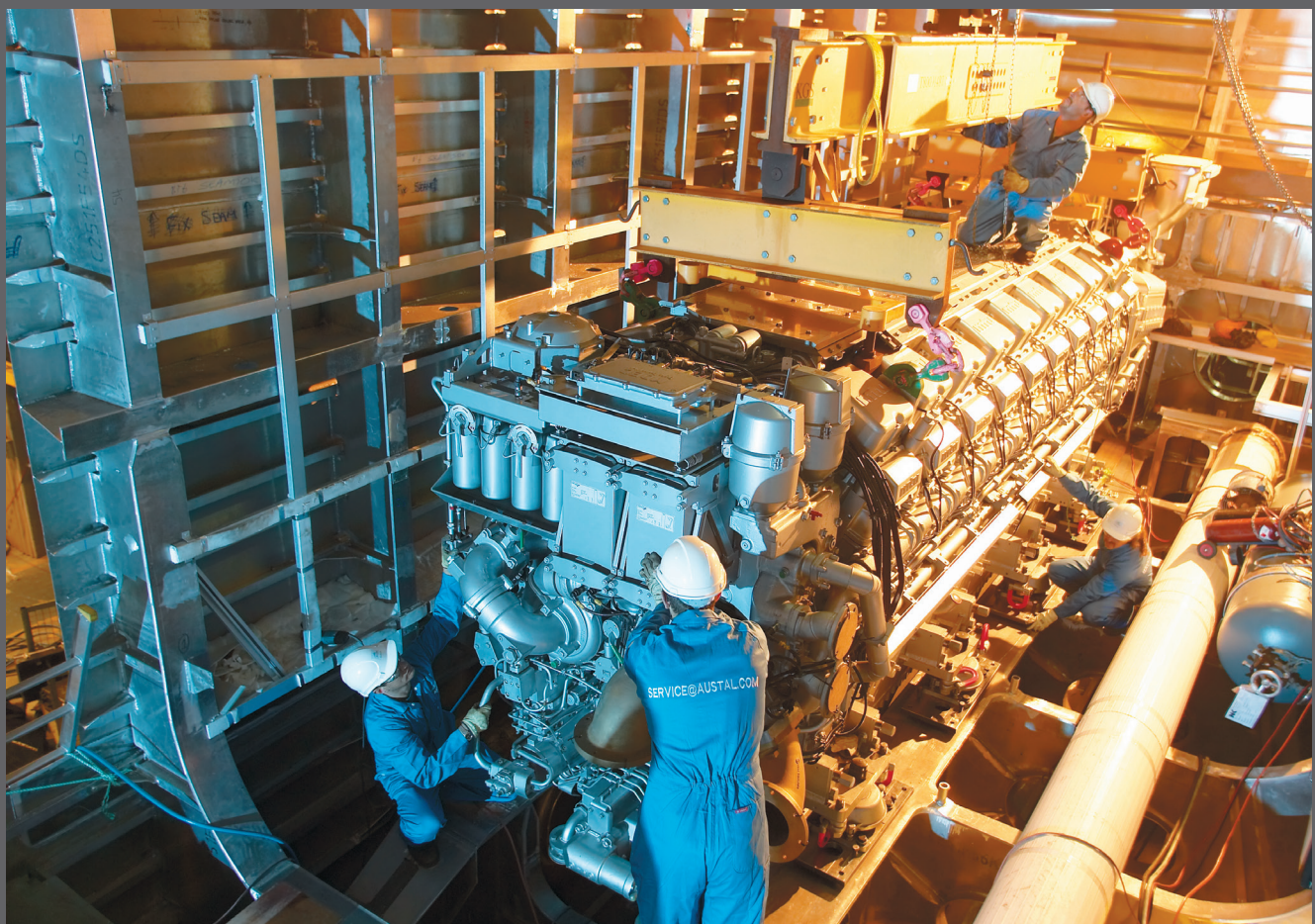
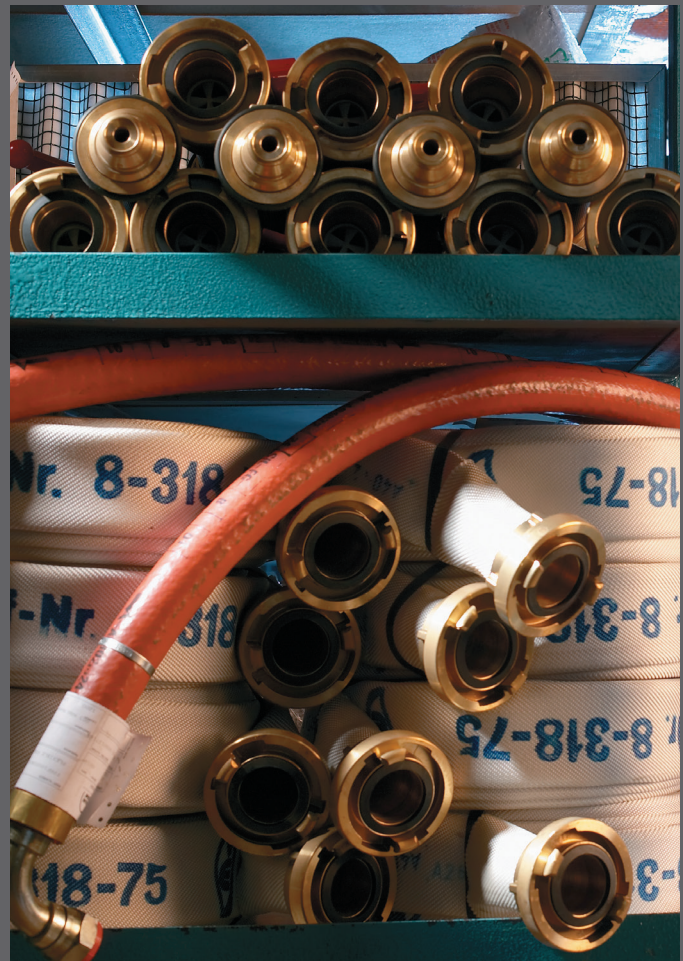
Spare Parts and Equipment, Inventory Management

With an extensive global supplier network and the buying power of the world's largest aluminium shipbuilder, Austal provides vessel operators with the ultimate source for all vessel parts, equipment, consumables and tooling; from the smallest parts right through to pre-fabricated vessel components.

Orders can be placed 24 hours a day and the teams' thorough product knowledge ensures top quality support for all enquiries and purchases.

Austal's extensive knowledge of vessel operations, maintenance, spare parts and consumables requirements ensures clients are well informed on recommended operating stock levels and have access to 'urgent' or emergency stock supplies whenever needed.

As a manufacturer, itemising and supplying the required, scheduled maintenance spare parts for all on-board equipment, Austal can assist with (or effectively manage) customers' vessel parts and consumables replacement programs.





Brisbane Shipyard
397 Thynne Road
Colmslie QLD 4170
+61 7 3902 3555

Cairns Shipyard
61-79 Cook Street
Cairns QLD 4870
+61 7 4041 9700

service@austal.com
australia.austal.com/service-centres