

AUSTAL 41



PRINCIPAL DIMENSIONS

Length overall	41.2 metres
Length (waterline)	38.2 metres
Beam (moulded)	10.9 metres
Depth (moulded)	4.3 metres
Hull draft (maximum)	Up to 2.0 metres with ride control fitted

PAYLOAD AND CAPACITIES

Passengers	405
Crew	8
Maximum deadweight	39.41 tonnes
Fuel	7,500 litres

PROPULSION

Main engines	4 x MTU 16V 2000 M72 4 x 1440 kW @ 2250 rpm
Gearboxes	4 x Reintjes VLJ 730 HL/HR
Waterjets	4 x Kamewa 56A3

PERFORMANCE

Speed (90% MCR)	37.5 knots
-----------------	------------

CLASSIFICATION

Det Norske Veritas
 ✕ 1A1 HSLC Passenger R2 EO Passenger A
 Trinidad and Tobago



“PARIA BULLET”, “TRINI FLASH”, “CARNIVAL RUNNER” & “CALYPSO SPRINTER”

YARD NO: 237 & 238 / 406 & 407

DESTINATION: TRINIDAD & TOBAGO

DELIVERED: 2010

CLIENT: NIDCO

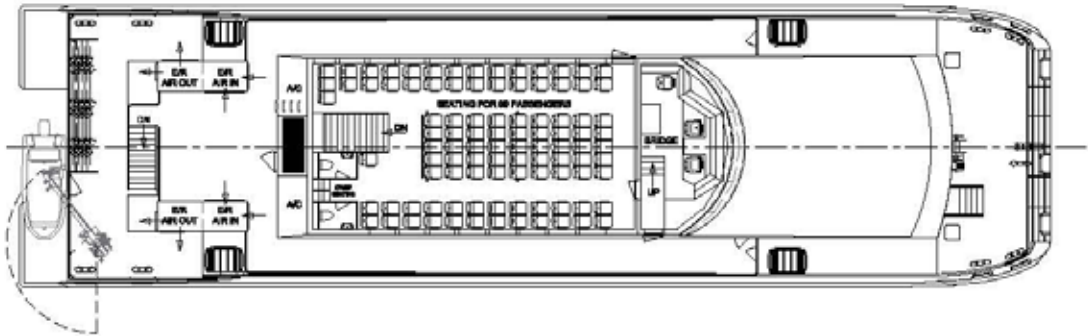
AUSTAL 41

Vessel type: 41m High Speed Passenger Catamaran

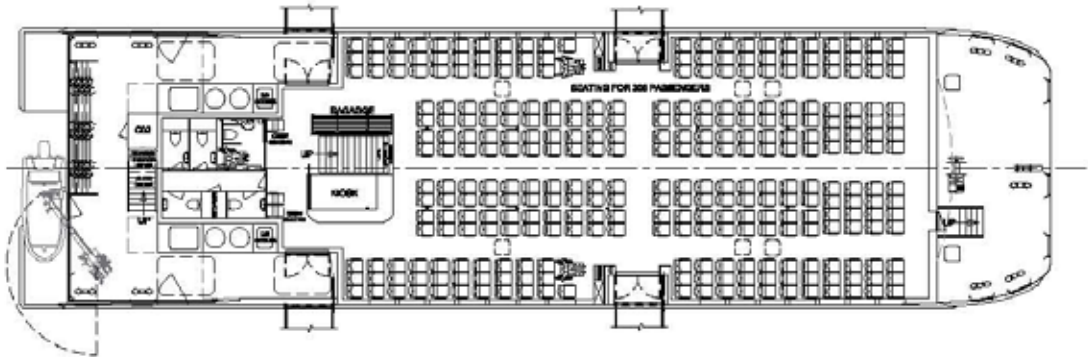
PROFILE



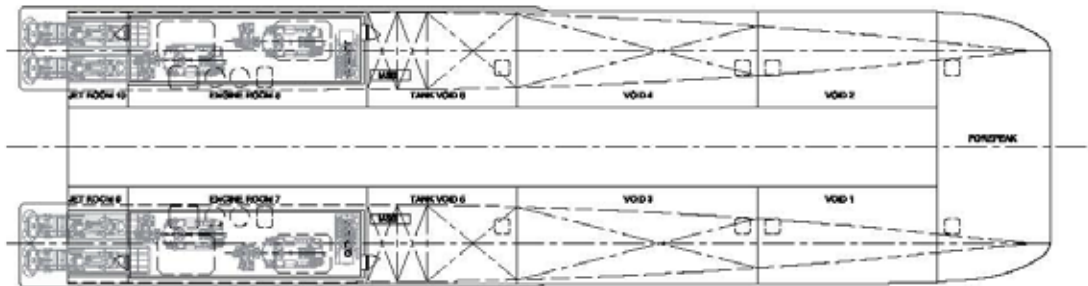
UPPER DECK



MAIN DECK



HULLS



YARD NO: 237 & 238 / 406 & 407

DESTINATION: TRINIDAD & TOBAGO

DELIVERED: 2010

CLIENT: NIDCO

"PARIA BULLET", "TRINI FLASH", "CARNIVAL RUNNER" & "CALYPSO SPRINTER"