

AUSTAL PATROL 24



PRINCIPAL DIMENSIONS

Length overall	24.0 metres
Length (waterline)	21.7 metres
Beam (moulded)	7.8 metres
Depth (moulded)	3.14 metres
Hull draft (maximum)	1.39 metres

PAYLOAD AND CAPACITIES

Crew accommodation	4 x 2 berth + 6 additional berths
Maximum deadweight	
1C & 1D	14.96 tonnes
2B	11.19 tonnes
Fuel	7,600 litres

PROPULSION

Main engines	2 x MTU Series 60 499kW @ 2145 rpm
Gearboxes	2 x Twin Disc 'Quickshift' MGX-5135SC
Propellers	2 x Bruntons 5 Blade

PERFORMANCE

Maximum speed	26 knots
Service Speed	20.0 knots @ 70% MCR
Range	900nm @ 20.0 knots

RIDE CONTROL

MDI active interceptor system fitted

SEA BOAT

Deployable and retrievable 6m RHIB system

CLASSIFICATION

USL survey classes 1C, 1D & 2B



YARD NO : 403 - 405
"LYLE M HOEY", "W CONROY" AND "BRETT T HANDRAN"

DESTINATION : QLD, AUSTRALIA

DELIVERED : 2009

VESSELS DESIGNED BY ONE2THREE NAVAL ARCHITECTS

CLIENT : QLD POLICE SERVICE

AUSTAL PATROL 24

Vessel type: 24m Catamaran Police Boat

YARD NO : 403 - 405

DESTINATION : QLD, AUSTRALIA

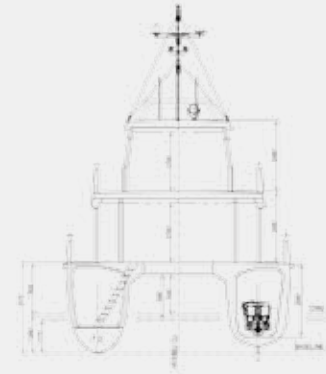
DELIVERED : 2009

CLIENT : QLD POLICE SERVICE
VESSELS DESIGNED BY ONE2THREE NAVAL ARCHITECTS

PROFILE

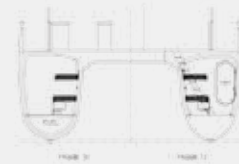
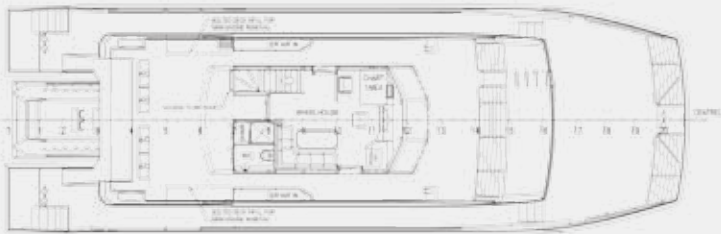


PROFILE CENTRELINE



MIDSHIP SECTION

UPPER DECK



ACCOMMODATION SPACE SECTION

MAIN DECK



LOWER DECK

