

AUTO EXPRESS 65



"SHINAS" AND "HORMUZ"

YARD NO: 263 & 264

DESTINATION: OMAN

DELIVERED: 2008

CLIENT: SULTANATE OF OMAN

PRINCIPAL DIMENSIONS

Length overall	64.8 metres
Length (waterline)	61.1 metres
Beam (moulded)	16.5 metres
Hull depth (moulded)	6.2 metres
Hull draft (maximum)	2.1 metres

PAYLOAD AND CAPACITIES

Passengers	208
Crew	12
Vehicles	56
	or 54 truck lane metres plus 34 cars
Maximum axle loads	
Aft main deck	9 tonnes (single wheel) 12 tonnes (dual wheel)
Remainder of main deck	3 tonnes (single wheel)
Vehicle deck clear height	3.1 metres
Helicopter	Agusta Westland AB139 or equivalent
Fuel	44,000 litres

PROPULSION

Main engines	4 x MTU 20V 1163 TB73L 4 x 6,500 kW
Gearboxes	4 x Reintjes
Waterjets	4 x Kamewa 90 SII

PERFORMANCE

Service speed (95% MCR)	51.5 knots
-------------------------	------------

CLASSIFICATION

Det Norske Veritas / IMO HSC 2000



AUTO EXPRESS 65

Vessel type: 65m High Speed Vehicle-Passenger Catamaran

"SHINAS" AND "HORMUZ"

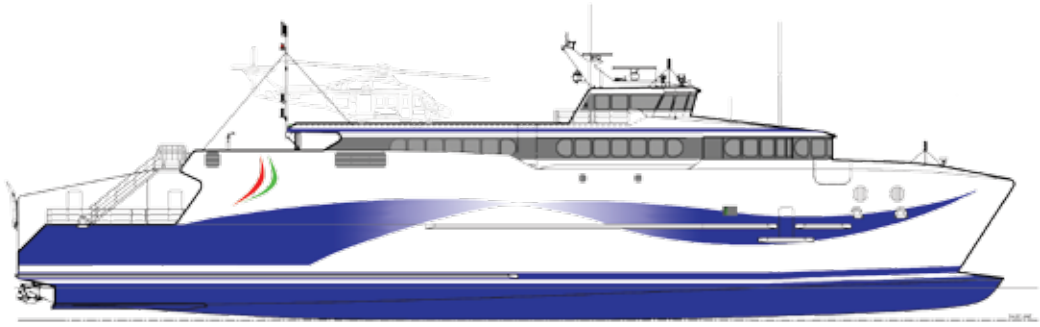
YARD NO: 263 & 264

DESTINATION: OMAN

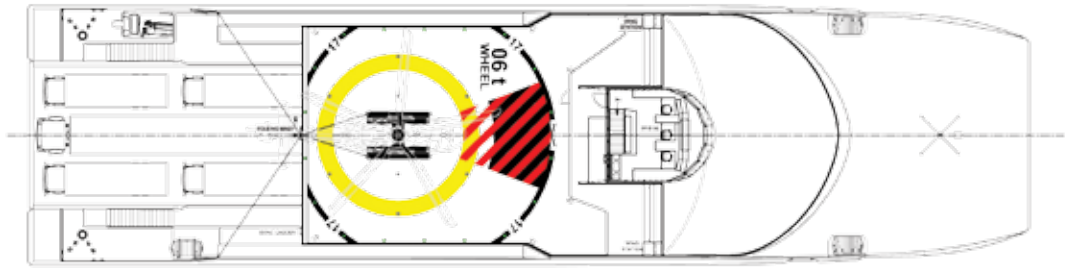
DELIVERED: 2008

CLIENT: SULTANATE OF OMAN

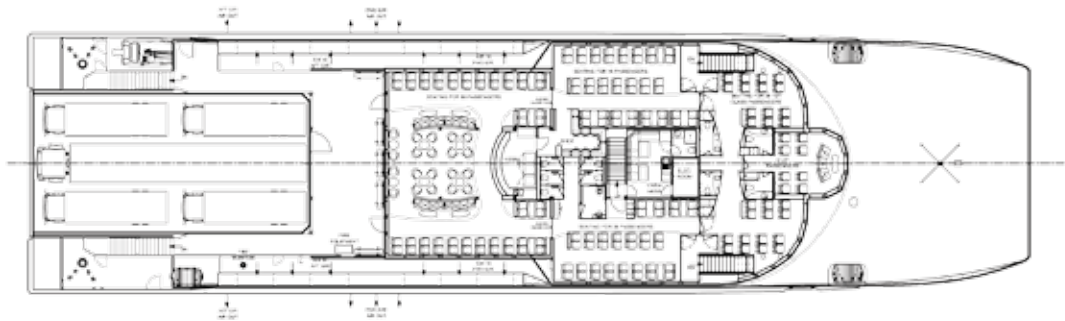
PROFILE



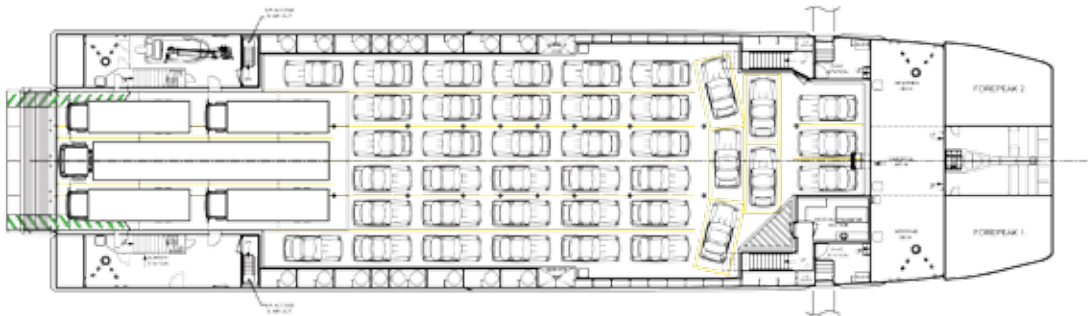
BRIDGE DECK



UPPER DECK



MAIN DECK



HULLS

