

AUSTAL 44



Image courtesy Bounty Cruises

PRINCIPAL DIMENSIONS

Length overall	44.0 metres
Length (waterline)	38.4 metres
Beam (moulded)	11.8 metres
Hull depth (moulded)	4.5 metres
Hull draft (approx)	1.59 metres

PAYLOAD AND CAPACITIES

Passengers	504
Crew	16
Fuel	11,150 litres

PROPULSION

Main engines	2 x MTU 16V 396 TE 74L 1,960kW @ 1,940rpm
Gearboxes	2 x Reintjes WVS 930
Propellers	2 x Teignbridge Fixed Pitch five blade

PERFORMANCE

Speed (40t DWT, 100% MCR)	30 knots
Fuel Consumption @ 90% MCR	920 litres/hour

CLASSIFICATION

Western Australian Department of Transport Uniform Shipping Laws Code (USL Code), Class 1 C



"GEKA 2000"

YARD NO : 62

DESTINATION : BALI, INDONESIA

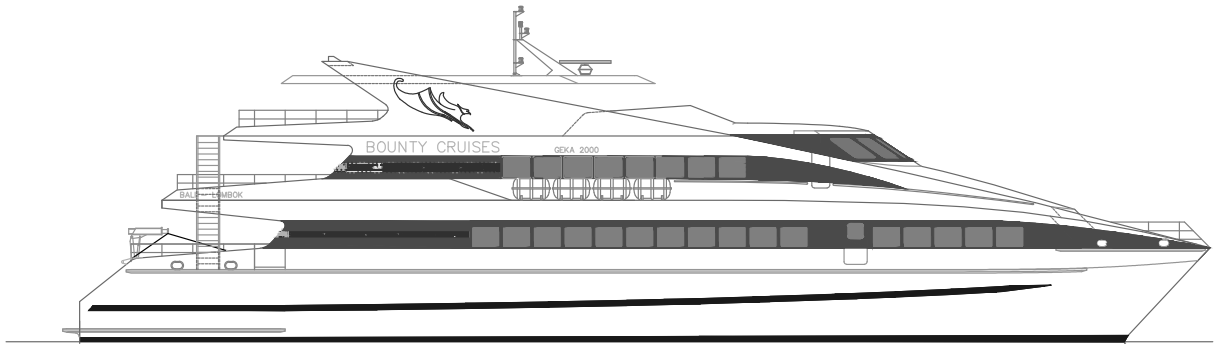
DELIVERY : JULY 1999

CLIENT : BOUNTY CRUISES

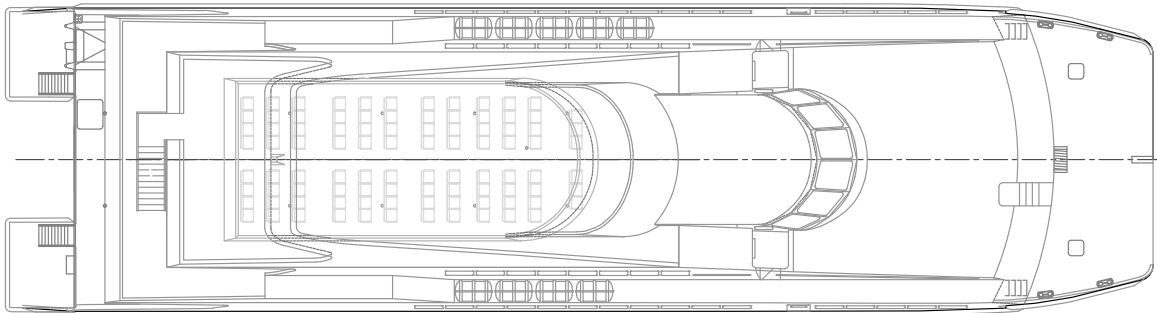
AUSTAL 44

Vessel Type: 44m High Speed Passenger Catamaran

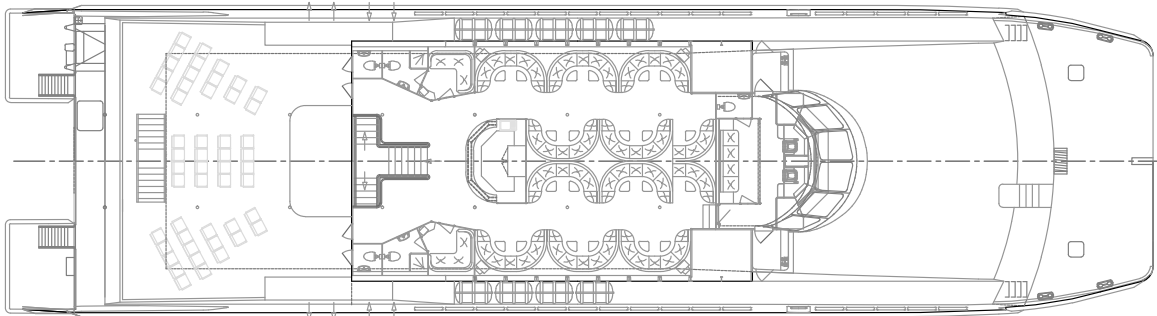
PROFILE



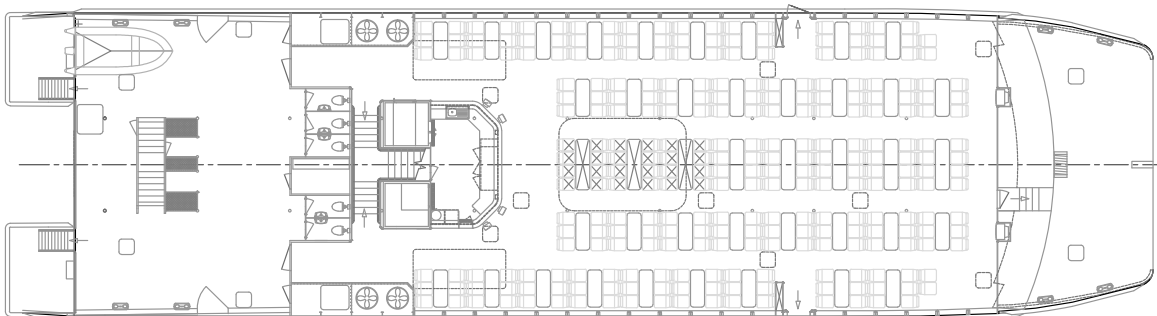
PROMENADE



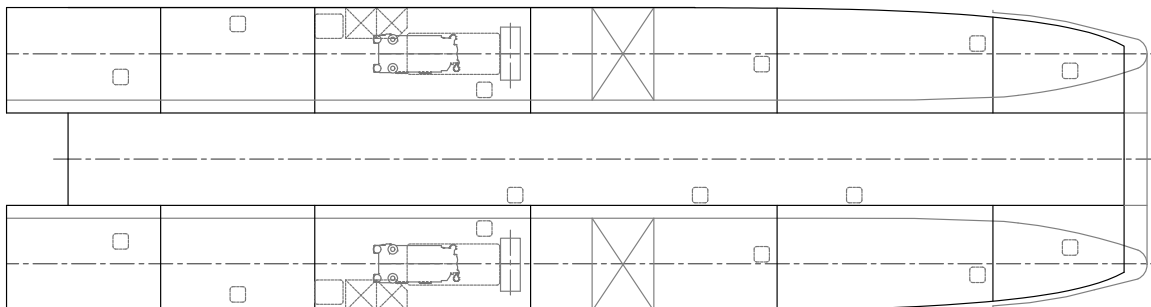
UPPER DECK



MAIN DECK



HULLS



"GEKA 2000"

YARD NO : 62

DESTINATION : BALI, INDONESIA

DELIVERY : JULY 1999

CLIENT : BOUNTY CRUISES

SHIPS • SYSTEMS • SUPPORT

WWW.AUSTAL.COM

